

LET'S TALK SPEECH

Communication Sciences & Disorders

NEWSLETTER

VOLUME 11 • ISSUE 1 • SUMMER 2019



CONTENTS

Message from Professor Alimonti	1
CSD-Living the Molloy Mission	2
Speech, Language, and	
Hearing Center News	3
Alum in the Spotlight	4
Social Media and Award Recipients	5
Day In the Life of a Graduate Assistant	6
Student Data	7
Continuing Education	8
Community Outreach	9
Faculty	10-11
Honors/Graduation	12-13
NSSLHA & ASHA 2020 Standards	14
Gallery	15
Carrying Out Our Program's Mission	16
Contact Information/	
Mission Statement	16



A Message from Professor Alimonti

Over the 2017-18 and 2018-19 academic years, the Communication Sciences and Disorders (CSD) Department has thoroughly embraced Molloy's current theme of "Navigating Transition". I am sure you will enjoy reading this newsletter as much as I have enjoyed compiling its components. Molloy CSD continues to enjoy success in many ways. From well prepared and successfully employed students, meaningful service learning projects near and far, newly renovated

and expanded clinical and lab spaces with instrumentation which is second to none, to welcoming new faculty members and expanded clinical services, there are many positive and joyous things to report!

As you read this edition of *Let's Talk Speech*, I invite you to share in our successes, of which you are all a part. I also invite you to share the pride we take in providing an education rich not only in knowledge and clinical experiences, but also rich in the service driven missions of both Molloy College and the CSD programs!



FOLLOW US ON SOCIAL MEDIA:



@MolloySpeechPathology
@MolloySpeechLanguageHearingCenter



@Molloy_CSD



Molloy students at the Long Island Coalition for the Homeless Health and Wellness Fair and Candlelight Vigil

CSD-Living the Molloy Mission

Students in both the undergraduate B.S. program and the graduate M.S. program have continued to engage in an education true to the Molloy Mission. Our service to Head Start and local school districts in need continues. In addition to Molloy students and faculty providing speech-language screenings and language enhancement groups, free-of-charge, to children in Head Start programs throughout Nassau County, we have now expanded and included hearing screenings to the children at Head Start as well. This is just one component of our students' diverse clinical experiences. In the spring of 2019, we also assisted with Head Start and additional referrals, when for the first time, we participated in the Long Island Coalition for the Homeless's (LICH) Vigil and Resource Fair.

Our inaugural participation in the LICH event was a great success. Under the direction of Professor Alimonti, graduate student Kristen Zito recruited and organized student volunteers and fundraisers to support this at risk population. On the evening of the event, Molloy CSD students provided screenings and appropriate referral resources, educational information, many, many children's and young adult books, and other needed supplies, to children and families in need. We were happy to also recruit students across additional programs to participate as well.

Additionally, we are pleased to report that Molloy CSD again won Autism Speaks' Long Island College of Excellence Award, as the top college fundraiser in 2017 and 2018. We are currently preparing for the 2019 walk and have decided to earmark this year's funds raised for vocational services for adults and young adults with Autism.

Finally, as we prepare for

this year's medical mission trip to Kingston, Jamaica, we are happy to report that Professor Alimonti and Dr. Schmidt have attained permanent Speech Licensure in Jamaica. We plan to begin providing telepractice services throughout the year at the speech center this fall. This will enable us to provide more sustainable and effective programming to the communities we visit in Jamaica.



Some of the materials donated

**SAVE
THE
DATE**

Rising Star Cocktail Party
Thursday, October 3, 2019
at 6:00pm
Reception Room, Kellenberg Hall

Autism Walk
Sunday, October 13, 2019
Jones Beach Field 5
Stop by our table for guided language stimulation and sensory activities, educational handouts, and giveaways!

Colloquia
Thursday, September 12, 2019
Thursday, October 10, 2019
Thursday, November 7, 2019
Larini Room at 7:00pm

Continuing Education
Friday, December 6, 2019
Molloy College
1000 Hempstead Ave
Rockville Centre, NY 11570
516.323.3550



Molloy College **Speech, Language and Hearing Center (SLHC) News**

The Molloy College Speech, Language, and Hearing Center is excited to announce our recent expansion! We now have new treatment rooms as well as a sensorimotor room where our students can work on our clients' communication skills while providing sensory input and gross motor movements. Our clinical educators have also moved into newly expanded and remodeled spaces, providing more locations for confidential student discussions. We are thrilled to begin our Fall 2019 Clinic Session with a diverse client caseload in our newly expanded space!

Additionally, the speech center will be offering audiological services to the community. Dr. Polina Shuminsky, Aud., CCC-A, will be offering the following services:

- Comprehensive audiological evaluations for children and adults
- Hearing instruments evaluation, selection, and fitting
- Aural (hearing) rehabilitation
- Central Auditory Processing evaluations
- Tinnitus evaluation and counseling
- Musician's ear plugs, custom ear protection, and swim plugs



**PLEASE CALL US AT (516) 323-3545
FOR ADDITIONAL INFORMATION ABOUT OUR SERVICES!**

SLHC Client Testimonial

Associate Director of Nursing, in the Division of Continuing Education and Professional Development, Kathy Lapkowski, was recommended for voice therapy post surgery. She began receiving speech therapy services at another facility. However, she felt she needed more. It was then that she reached out to Professor Alimonti about the Molloy College Speech, Language, and Hearing Center.

Mrs. Lapkowski was nervous to begin receiving services at the speech center, but soon found her fears unfounded. She said, "When I walked into the center, I instantly felt comfortable." She was specifically impressed with the level of professionalism of the Speech-Language Pathology students. Consistent with Molloy's emphasis on evidence-based practice, Mrs. Lapkowski's personal goals were addressed by her student clinicians who integrated theory and practice to implement appropriate intervention techniques under the clinical guidance of Professor Gillis. Mrs. Lapkowski shared, "I felt fully involved in participating in the activities my student clinicians had planned for me. At first, I did not understand why we engaged in certain exercises or did certain worksheets, but over time I began to understand more as I utilized the strategies my student clinicians provided. I began to feel my confidence grow which enabled me to be comfortable going out socially and speaking in public." Mrs. Lapkowski mentioned that she still incorporates those strategies into her daily life and thanks the experienced clinical educators and "service oriented" student clinicians who worked so closely with her on achieving her goals.



Alumna in the Spotlight

Theresa Quinn, MS, CCC-SLP, TSSLD



Theresa Quinn, MS, CCC-SLP, TSSLD, graduate of Molloy College's Master of Science Speech-Language Pathology program in 2015, is this year's alum in the spotlight. After graduating from Molloy in 2015, Theresa found herself unsure of what population with which she wanted to work. Upon considering all of her options, and what would be most rewarding, Theresa decided to

become a traveling therapist and thus began her journey working in various settings and geographic locations.

Theresa first began working in a school district in Georgia. She then worked in an adult rehabilitation facility. There she gained confidence and experience in asking the right questions and managing situations which challenged her professional ethics. (Here Theresa fondly recalled her Professional Issues and Ethics class with Dr. Schmidt.) Theresa then worked in

New Jersey before moving to her third state, Maryland, where she worked in a private school for the next two years.

In Maryland, the school had an emphasis on social thinking which required Theresa to play a role in allowing students to learn from experiences, and use more positive language. Keeping with evidence-based practice, this school prided itself in finding the most up to date research and implementing it within the classroom immediately. Theresa referenced Michelle Garcia Winner and Sarah Ward as two of the highlighted methodologies. Theresa also mentioned that collaboration played a significant role as she constantly collaborated with occupational therapists, parents, and teachers of her students.

Theresa, up for another challenge, is getting ready for her next location as she travels to Canada where she will continue to provide speech and language services. Although nervous for what lies ahead, she looks forward to the experiences that she will have there.

When asked what has been the most rewarding moment of her career thus far, Theresa said, "For me, the most rewarding moment was when I had a student confide in me. It just makes you feel good to know that you matter to this student."

Theresa's Helpful Hints for Professional Practice

Different states have different criteria pertaining to the number of students you are permitted on your caseload. Don't be afraid to speak up and advocate for yourself to prevent becoming overworked.

Make and keep copies of everything! You never know when you might need your transcript when applying for a job or if you decide to travel and leave the country.

Don't brush off certain topics that are covered in our field of Speech-Language Pathology. Be open to everything because you never know where you might end up.

When looking for a CF placement, be open minded! Ask questions and be curious, you're allowed. You want to make sure you are getting the most out of your experience.

Stay connected with peers in your own way (facebook, texting, etc.). They can be a huge help when you need

someone to bounce ideas off of.

Wait to take the Praxis! Don't rush to get it over with. Wait it out! I found the best time to take it was around the time of my comps.

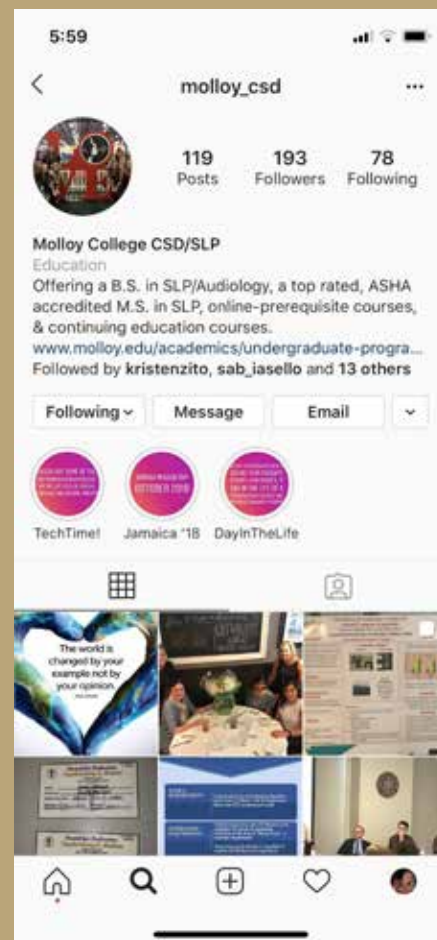


Let's Get Social!

By Laura Russo, MS, CF-SLP, TSSLD

I'm not talking about pragmatic language, but the Molloy College CSD Social Media initiative! During my time at Molloy, my classmates and I have given our Instagram account a makeover. Getting students involved means that you get a front row seat to our lives within the program.

On the main feed, you'll get a glimpse of the students and faculty both in and out of the classroom. This is a great way to take a peek at unique opportunities including colloquia and the Recovery Through Performance productions. In order to dive deeper, the highlight section at the top gives detailed pictures, videos, and insight. The highlights include 'TechTime!' (which is used to demonstrate and describe various instrumentation), 'Jamaica '18' (which shows the most recent trip to Kingston, Jamaica) and 'DayInThe-Life' (which features a typical day as a graduate student). This initiative is not only exciting but a fun way for all to get involved. Don't forget to throw us a 'follow' and 'like' on our Instagram @Molloy_CSD



Joan Fox Recipients

2018- Emily Levine



2019- Kristen Zito



A Day In The Life of a Graduate Assistant

By Hannah Butkiewicz

Upon my acceptance to Molloy College's graduate program for speech-language pathology, I knew I wanted to make the most out of my 2 years in the program and learn as much as possible. So, when I saw an opening for Dr. Hia Datta's graduate research assistantship position, I applied immediately. Over the 2018-2019 school year, I have worked with Dr. Datta and collaborated with many other professors and students. I have been able to gain knowledge outside of the classroom and improve my abilities in many aspects required for research such as writing, data collection, and analysis.

I have been involved in many projects under Dr. Datta's supervision and guidance, many of which have involved interdisciplinary research. Through interdisciplinary collaboration, we were able to research and implement ways to provide our clients with a holistic treatment approach that benefits them beyond their communication. For example, the Communication Sciences and Disorders Department collaborated with the Clinical Mental Health Counseling Department to provide drama therapy in conjunction with speech-language therapy to persons with aphasia. Throughout this project, I witnessed

the speech and language of individuals with aphasia improve as well as their social-emotional wellbeing and confidence. This was such an amazing project that I can not wait to be involved with again this coming year.

I collaborated with other students across disciplines and mentored an undergraduate CSD student during an interesting research project. Bridget Gillespie, a student in Dr. Datta's senior research seminar classes during the 2018-2019 school year, wanted to investigate how exaggerations in prosody and facial features contribute to an infant's attention during infant directed speech. Together, Bridget and I collaborated on ways to turn her idea into a research project. I continued to assist her as the project progressed through the various stages of recruitment, running participants and analyzing data. We then presented a poster at the Intersection of Linguistics, Language, and Culture Conference at LIU Brooklyn. This experience was new and exciting because I was able to see and work on a project from the very beginning until the end and witness the entire research process.

As I enter my second year as a graduate student and research assistant, I am excited to work on upcoming projects and events. One thing I am particularly excited for is presenting a poster at the ASHA Convention in Orlando, Florida this November. The project we are presenting is on the use of therapeutic theater in increasing awareness of, and empathy towards persons with aphasia.



Dr. Hia Datta with graduate student Hannah Butkiewicz and undergrad presenters Bridget Gillespie and Tabasum Saljooki

Average Accepted Graduate Student Profile

Year	GPA	GRE V	GRE Q	GRE Writing
2019	3.57	148	145	4
2018	3.6	148	146	4
2017	3.62	144	147	4
2016	3.54	146	145	4

Graduate Student Outcome Data

EMPLOYMENT DATA

Year	Number of Graduates	Number Employed	Employment Rate
2018	37	37	100%
2017	41	38	93%
2016	28	27	97%
2015	20	20	100%

PROGRAM COMPLETION RATE

2019	42 of 43 graduates completed in expected time frame –98%
2018	35 of 37 graduates completed in expected time frame – 95%
2017	38 of 41 graduates completed in expected time frame – 93%
2016	28 of 28 graduates completed in expected time frame – 100%

PRAXIS PASS RATE

	Number taking exam	Number passed	Pass rate
2019	43	40	93%
2018	38	36	95%
2017	41	40	98%
2016	28	25	96%

Continuing Education Programming in CSD

In collaboration with The Division of Continuing Education and Professional Development, Molloy's CSD Department continues to regularly provide quality professional development courses for individuals working in the communication sciences and disorders, and related disciplines. Since our last issue of Let's Talk Speech, we have provided many exciting programs to a diverse audience of professionals.

In the summer of 2017, we were lucky to welcome Henriette W. Langdon, Ed.D., F-CCC-SLP, BCS-CL, and our own Jessebell Reyes-Cocuzzo, M.S., CCC-SLP, TSSLD, BIL, who presented Dilemmas and Solutions in Differentiating a Language Disorder From a Language Difference in ELL Populations. This program began a two part series focused on assessing and treating individuals who speak, or are exposed to more than one language.

Our bilingualism series continued in the fall of 2017, when Marta Korytkowska, MS CCC-SLP and Taryn Malcolm, M.A., CCC-SLP, presented Assessment, Treatment, and Recovery Patterns of Language in Bilingual Individuals with Aphasia.

Spring 2018 began with Presenter Elaine Dolgin-Lieberman, MA, CCC-SLP, providing an important program, Childhood Apraxia of Speech: Diagnosis and Treatment. This program rich in evidence-based strategies for assessment and intervention, was widely attended and enjoyed by all.

In the fall of 2018, Keynote Speaker Ann W. Kummer, PhD, CCC-SLP, stressed the importance of evidence-based interventions when working with individuals with Speech/Resonance Disorders Due to Cleft Palate and Velopharyngeal Dysfunction. This program was widely attended by current students, in addition to professionals from a wide geographic area.

In June of 2019 we were happy to host an inter-professional panel on pediatric feeding disorders. Considerations in Pediatric Feeding & Swallowing: A Multi-Disciplinary Panel Discussion, was well received by all attendees. Esteemed panelists included Dr. Arik Alper- Pediatric Gastroenterologist, Dr. Eliza Myers-Neonatologist, Dr. Cindy Arroyo-Speech-Language Pathologist, and Dr. Scott Siegel - MD, DDS, Oral and Maxillofacial Surgeon. We were also pleased to welcome Dr. Louisa Ferrara, CCC-SLP, BCS-S, CNT, a new Molloy faculty member for Fall 2019, as co-moderator, with Susan Alimonti.

We also have some exciting upcoming programs, increasingly of an inter-professional nature. On December 6, 2019, psychologist Lauren Tobing-Puente, PhD, and Polina Shkadron, CCC-SLP, will present The Interconnection of Trauma and Its Effects on Child Development: A Focus on Executive Functioning and Social-Emotional Skills. This timely, inter-professional program will surely provide attendees with valuable evidence and insight regarding the effects of trauma on typical development.

In addition, upcoming spring 2020 programs include Augmentative and Alternative Communication,

and two inter-professional programs. The first, a panel addressing vaccine refusal, will include Dr. Kristen Feemster, Director of Research for the Vaccine Education Center at Children's Hospital of Philadelphia and Medical Director of the Immunization Program and Acute Communicable Diseases at the Philadelphia Department of Public Health. Finally, in conjunction with changes in ASHA 2020 Certification Standards, a program covering ethics will also take place in the spring of 2020, and programs to meet the ethics requirement will reoccur approximately every two years.

If you have questions about continuing education programming in speech-language pathology at Molloy, please contact Susan Alimonti at salimonti@molloy.edu or 516-323-3517.



Dr. Ann Kummer, CCC -SLP



Community Outreach in Jamaica

My name is Laura Russo and I am officially a Molloy College MS SLP alumna as of May 2019! During my time at Molloy, I was fortunate enough to participate in the October 2018 Mission Trip to Kingston, Jamaica. Dr. Schmidt, Professor Alimonti and eight second year graduate students formed a team that worked together to provide speech, language, and hearing screenings within the Jamaican community.

The work started on American soil. As a team, we organized a backpack and school supplies drive. Additionally, we all contributed to a bake sale which raised money in order to buy more supplies. We found that our Molloy community was unbelievably supportive. Faculty and students donated an abundance of backpacks and school supplies as well as contributed monetary donations. The donations were not only appreciated by us, but by the students we were able to hand deliver them to.

Once in Jamaica the real fun started. Each day, we would go out into the community to provide speech, language, and hearing screenings. We were fully equipped with pens, paper, and a peanut butter and jelly sandwich. No, we didn't carry the PLS-5 in our back pockets and a soundproof booth was definitely not fitting in our backpacks. As we traveled to each school, we learned to use the resources we were able to carry and anything in our immediate environment in order to gain an understanding of the individual's skillset. We utilized creativity when provided with a book and some blocks in order to informally assess language. We practiced patience when using a portable audiometer in a room intermittently filled with chatter. Within a short period of time with each individual, we made clinical decisions on whether further evaluation was warranted, and at times how faculty could best enhance each child's classroom experience. By the end of the day, our new clinician muscles were aching, but we also felt ourselves getting stronger.

After this trip, what resonates most is the experience of being fully emerged within a culture that was different from my

own. It was a learning experience which simply cannot be provided in a classroom. It was a humbling and enlightening experience. I left with a true appreciation for a culture other than my own and it was empowering to embrace our differences.

Overall, the Jamaica Mission Trip 2018 was a great success. Not only were we able to travel to several schools and a community clinic and provide countless screenings and information, but we were getting just as much out of it as the individuals we were serving. At some point during the trip, we realized we were engaged in a truly transformative experience. I would like to thank Dr. Schmidt and Professor Alimonti- the trip would not be possible without you two and your wonderful support. Also my teammates-Samantha Cosentino, Christine Cintron, Sabrina Iasello, Ariana Franza, Melissa Kopchynski, Caroline Farella, and Christen Delillo- this experience wouldn't have been the same without you lovely ladies!



Focus on Clinical Education

Professor Jamie Gold Morgan, MS CCC-SLP, TSHH, PC an accomplished and PROMPT certified speech-language pathologist, first joined our team in the capacity of clinical educator. From there, Professor Morgan took on the role of Clinical Coordinator in the fall of 2014. With great enthusiasm and sincere thoughtfulness, Professor Morgan **faced the challenges** of placing an increasing number of students in competitive clinical placements. She successfully provided diverse and individualized experiences to each student while simultaneously **growing the number of affiliations** exponentially. Just one example of her success was the placement of Molloy graduate, **Arielle Mayer '15 and '17**, in an externship with a new affiliate in **Puerto Rico**.

Having relinquished her clinical coordination responsibilities, Professor Morgan looks forward to continuing to educate Molloy students through focusing on her role as an adjunct instructor. She **values the feedback** she is given from the students and looks forward to further implementing that feedback into her classes. She encourages students to, "Take advantage of the clinical opportunities you are given and always remember to self-reflect."



This past year we congratulated **Professor Stephanie Thomson, MA, CCC-SLP, TSSLD**, on her new role as **Lead Clinical Educator**. A graduate of Molloy's Bachelor of Science program in Speech Language Pathology and Audiology, Professor Thomson always knew she wanted to work with children. After earning her Master's degree at Queens College, Professor Thomson acquired experiences working with diverse populations across varied clinical settings. Given Professor Thomson's love of both learning and teaching, Dr. Schmidt recruited her to join the adjunct CSD faculty. She quickly jumped at the opportunity and before long began working at the Molloy College Speech, Language, and Hearing Center as a clinical educator. Beginning in September 2018, Professor Thomson took on the role of Lead Clinical Educator. She loves working collaboratively with the Molloy College students and other faculty at Molloy. As for this upcoming year, Professor Thomson, looks forward to seeing how this new position will transform over time. Her goals for her students are that they "feel a **sense of pride** in the work they are doing, and see their **hard work** pay off."

Farewell and Best Wishes

Dr. McGarr and Dr. Saulle

Best wishes to Nancy McGarr, Ph. D, on her retirement. Dr. McGarr, an associate professor in the Communication Sciences and Disorders Department, began her long and storied

academic career in 1971 at Molloy College. She later returned to her roots at Molloy, before retiring in May 2019 capping off nearly 50 years of research and teaching. She will be missed!



Best wishes to Dr. Diane Saulle in her future endeavors. She will be missed.

Welcoming **Professor Gillis** to her New Position

Filling Professor Morgan's shoes could never be easy, but with an eclectic skill set, **Professor Cathy Gillis, MS CCC-SLP** has jumped wholeheartedly into her new role as Clinical Coordinator. Professor Gillis received her Bachelor's of Science degree at the University of Buffalo and her Master's of Science at Southern Connecticut State University. It was there that she fell in love with providing clinical services to adults with acquired neurogenic disorders. Come graduation, Professor Gillis completed her Clinical Fellowship working in a TBI unit, followed by working as a Speech-Language Pathologist at Mercy Medical Center. Always looking for a challenge, she also built a speech and swallowing clinic in the office of a local ENT. Here she was the sole provider of FEESSTs, videostroboscopies, voice evaluations, and voice therapy.

Though new to her role as Clinical Coordinator at Molloy, Professor Gillis has already **secured several new contracts**. She is enjoying teaching SLP 5912 and looking forward to continuing to build relationships and facilitate student growth. She is particularly enjoying being a witness to **student growth** during site visits. When asked what she is looking forward to most this upcoming school year, Professor Gillis said, "I am looking forward to getting to work with and know this incoming class. I cannot wait to see them grow in their clinical abilities as they go from start to finish."



Welcome **New Faculty**

We are happy to announce and welcome two new full-time faculty members to the Molloy CSD Department, Dr. Louisa Ferrara, CCC-SLP, BCS-S, CNT and Dr. Isabelle Barriere.

Dr. Ferrara received her Bachelor of Arts, Master of Science, and Ph.D in Speech Language Sciences and Disorders at Adelphi University. She began her clinical career assessing and providing therapy to preschoolers with speech and language disorders. Although she loved what she was doing, she felt she **wanted to experience more** within the vast field of Speech-Language Pathology. She began exploring professional development in the area of pediatric **feeding**, and quickly fell in love with this new area of interest. In 2010 at Winthrop Hospital, Dr. Ferrara **developed a NICU feeding program** in a level three NICU. Two years later she became Program Manager for Winthrop's Pediatric Feeding and Swallowing Program. In addition to her clinical work, Dr. Ferrara is a national lecturer, educating hospital systems on how to feed medically fragile patients. Dr. Ferrara has **published** two pieces of work on the swallowing mechanism in preterm infants. She is currently conducting new research on preterm babies in the NICU.

When asked what Dr. Ferrara is looking forward to most this year, she said, "I want my students to find their **passion**. I want them to find something that gets their hearts ticking and makes going to work in this field **worthwhile**." She also highlighted the importance of "being flexible" and "**accepting of change**" because "we work in a field that is constantly changing. So be ready for change and adapt."

Please look for a spotlight on **Dr. Barriere** and her research in our 2020 newsletter!



Dr. Louisa Ferrara



Dr. Isabelle Barriere

Congratulations to our 2018 and 2019 Graduates!



Professor Morr 2018 Graduates



2019 Graduate Celebration



2018 faculty and graduates



*2019 Academic Honors Recipient
Laura Russo with Professor Alimonti*



*2019 Honorable Mention
Melanie Ackerman*



Dr. Sandy White with Mrs. Gardner



*2018 Academic Honors Recipient Danielle
Novielli with Professor Alimonti and Honorable
Mention Recipient Kerryann Scirocco*

SLP Standards and Implementation Procedures for the Certificate of Clinical Competence

As many of you know, there are changes to ASHA's speech-language pathology certification standards being implemented January 1, 2020. While you should all review those changes in full, we are including some important notes below:

All recent graduates should apply online for their CCC prior to January 1, 2020

A minimum of 2 hours of professional development in clinical instruction/supervision (following certification) is required for all supervisors/clinical educators

A minimum of one certification maintenance hour in ethics will be required every certification maintenance pe-

riod (* see the section on upcoming Molloy continuing education programs)

(You can check your status on ASHA's Certification and Ethics Verification page)

Clinical Fellows please note the changes in language pertaining to your supervision!

Molloy College NSSLHA Chapter



NSSLHA had a great year of events and fundraising to continue their mission of service to the community. NSSLHA began their year by organizing the "Rising Star Cocktail Party" along with the department.

Members created raffle baskets and helped decorate the space in efforts to raise money for the Rising Star Scholarship, awarded to a senior continuing their studies in the field of Speech-Language Pathology or Audiology. They also held many fundraisers for the Autism Speaks Foundation, including a Nacho Sale, a Candy Bag Sale, and a Hot Chocolate Sale. Additionally, they co-sponsored an event with Operation Smile and Education Club to raise \$850 for Autism Speaks! It was important to the club to collaborate with other students aspiring to make a difference. During the holiday season, NSSLHA co-sponsored their annual "Jingle and Mingle" party with the Business and Accounting Club to collect toys for Toys for Tots. During the spring semester, NSSLHA co-sponsored events with Love Your Melon, InterVarsity, and the Freshman Class to raise proceeds for Molloy THON. Molloy THON is a year-long fundraiser to benefit Cohen Children's Hospital. The events all contributed to Molloy THON's grand total of \$18,000 fund-raised! NSSLHA continues to take pride in their contributions to the community and looks forward to a great 2019-2020 school year!





Welcome Back Cohort 1 Fall 2018



Undergraduate Research with Dr. Datta in The Brain, Behavior and Communication (BBC) Lab



October 2018 Autism Speaks Walk



Medical Mission Trip Fall 2017



Holiday Cheer from CSD December of 2018

Contact Us

Molloy College
Communication Sciences
and Disorders
1000 Hempstead Ave
Rockville Centre, NY 11570
516-323-3518
csd@molloy.edu

Find us on the web at:
Molloy.edu
Instagram: @Molloy_CSD
Facebook: @
MolloySpeechPathology

Dr. Sandra White
Chair
swhite@molloy.edu

Susan Alimonti
Associate Dean
salimonti@molloy.edu

Elisabet Gardner
Administrative Assistant
egardner@molloy.edu

Joanne Ascher
Speech Center Director
jascher@molloy.edu



Mission Statement

The Mission of the Communication Sciences and Disorders (CSD) Department is to provide students with an understanding of human communication and disorders of communication. Our goal is to prepare graduates to engage in interdisciplinary collaboration, ethical practice, and take positions of leadership within the professional community.

**Know someone in need of
a screening, evaluation
or treatment?**

Refer to:

The Speech, Language
and Hearing Center
at Molloy College
30 Hempstead Ave, Suite 243
Rockville Centre, NY 11570
516-323-3545
slhc@molloy.edu

Publisher

Communication Sciences
and Disorders Department

Editor in Chief

Susan Alimonti

Managing Director and Contributor

Breann Rissland

Contributors

Joanne Ascher
Hannah Butkiewicz
Michelle Del Re
Laura Russo

Carrying Out Our Program's Mission

Serving the community through inter-professional collaboration in education, research and practice



Inspirational quotes for
blessing bags for Long Island
Coalition for the Homeless
Health and Resource Fair



Graduate Assistant Kristen Zito
presented on Molloy's work with
Long Island Coalition for the
Homeless.



Future SLPs creating blessing bags



MS SLP and MS CMHC students and faculty at this year's culminating performance of
The Gift



TO LEARN MORE VISIT THE CSD PAGE ON THE WEBSITE MOLLOY.EDU