

MOLLOY COLLEGE GRADUATE EDUCATION

EDU 5900: The Foundations of Social and Emotional Wellness

(3 credits)

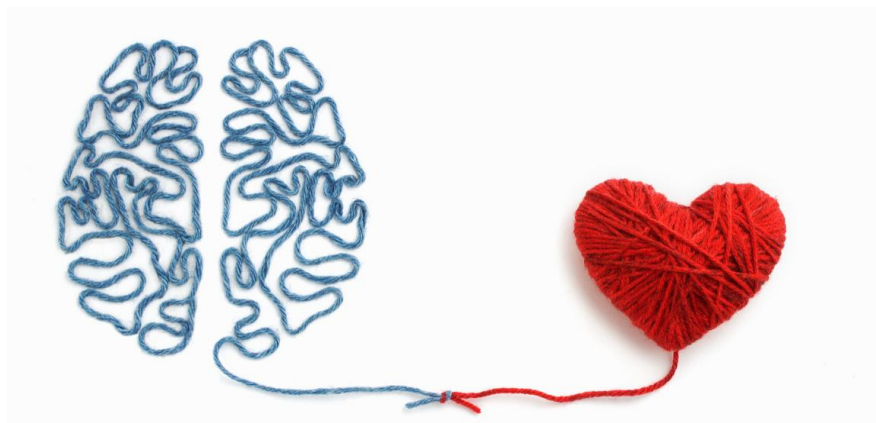


Image from istock.com

Catalogue Description:

This course covers the foundations, principles, and standards of Social-Emotional Learning (SEL) using the Collaborative for Academic, Social, and Emotional Learning (CASEL) framework. Students will analyze the theoretical and practical approaches to integrating SEL into curriculum and classroom instruction through a review of current research and case studies.

Course Objectives

Students will be able to:

- Define and explain major theories of socio-emotional development.
- Describe measures used to examine socio-emotional development.
- Identify the five core competencies of the CASEL framework

Required Materials

Perez, L. M. (2020). *Teaching with the Heart in Mind: A Complete Educator's Guide to Social Emotional Learning*. Brisca Publishing.

Course Requirements

1. School SEL Action Plan	20%
2. Group presentation on an SEL service learning plan	10%
3. Letter to State Education about the importance of SEL	20%
4. Canvas discussion board assignments	30%
5. Final reflection paper	10%
6. Class participation/Attendance	10%
Total	100%

LATE ASSIGNMENTS WILL RESULT IN LOWERING THE GRADE BY 10%.

Brief Description of Assignments

- School SEL Action Plan: Outline of an SEL action plan in the new school year. Describe an activity that you will use to build social awareness and self awareness. How will you make sure students really connect to one another? How will you ensure that everyone stays respectful to one another?
- Letter to State Education about Importance of SEL: Write a 3-6 paragraph letter to your state's education agency about implementing SEL into the school system, focusing on self-awareness, social awareness, and relationship skills initiatives. Describe some benefits, backed up by research (APA citations; at least 3 studies should be cited). Example: Implement classroom circles for ten minutes every morning and cite research on classroom circles' benefits. What is the concept behind the classroom circles approach?
- Group Presentation on Service Learning Plan: Service learning or project-based learning plan that helps students develop self-awareness, empathy, autonomy, social skills, and responsible decision-making. In your groups create a 5 minute presentation on a service learning plan you can implement in your schools

NOTE: Assignments submitted after the due date will lose 10% for each week that it is late.

Selected Bibliography

Berg, J., Nolan, E., Osher, D., & Mart, A. (2019). Social-emotional competencies in context: Using social-emotional learning frameworks to build educators' understanding. *Measuring SEL, Using Data to Inspire Practice*, 1-13.

Elias, M. J., Zins, J. E., Weissberg, R. P., Frey, K. S., Greenberg, M. T., Haynes, N. M., ... & Shriver, T. P. (1997). *Promoting social and emotional learning: Guidelines for educators*. Ascd.

Macklem, G. L. (2020). Social Emotional Learning Movement Growing Pains. In *Brief SEL Interventions at School* (pp. 1-27). Springer, Cham.

Oliver, B. M., & Berger, C. T. (2020). Indiana Social-Emotional Learning Competencies: A Neurodevelopmental, Culturally Responsive Framework. *Professional School Counseling*, 23(1_part_3), 2156759X20904486.

Yoder, N., & Skoog-Hoffman, A. (2021). Introduction: Motivating the SEL Field Forward through Equity. In *Motivating the SEL Field Forward Through Equity*. Emerald Publishing Limited.

Academic Integrity Statement

The college maintains and affirms a strong policy of academic honesty. Every member of the academic community has a duty neither to cheat nor to condone cheating, fabrication, plagiarism, or facilitation of academic dishonesty. Academic infractions are subject to disciplinary action as described in the Graduate Education catalog.

Accommodations

Molloy College makes a commitment to providing reasonable accommodations for any student with a documented disability or chronic illness. Like so many things this semester, the need for accommodations and the process for arranging them, may be altered by COVID-19. Students requiring accommodations in order to fully participate in this class are urged to contact Disability Support Services (DSS/STEEP) at dss@molloy.edu, as soon as possible.

APA Manuscript Style

All manuscripts in the field of education are written in the style format of the American Psychological Association.

Attendance Policy

In the case of any absence, please email the professor prior to class.

As professionals in your field, you are expected to attend each class session, to be present when it begins, to come prepared for class, and to participate productively in whole-class and small-group activities. Professionalism and respect are expected in classroom participation. Professional behavior includes turning off and stowing cellphones, refraining from outside conversation or activities (including Internet surfing, text messaging, or preparing for other classes/activities), and being a thoughtful and active listener.

Students are expected to attend classes regularly and punctually. For every absence after the third absence, your grade will be reduced by one-half letter grade for this class; e.g. a B+ become a B. Be advised that attendance will be taken at the beginning of each class. Students who arrive to class late are responsible for reminding the instructor to change the attendance for absent (A) to late (L). Three late class arrivals will officially count as one absence in determining your grade for this class.

It is the accepted practice at Molloy College that faculty take attendance in all courses.

- Students should notify faculty if an absence is necessary as the result of a serious situation.
- Failure to attend class for two (2) consecutive weeks at any point in the semester, without notification of extenuating circumstances, will result in an administrative withdrawal from the course.
- In the case of an online or hybrid course, attendance is considered similarly important. Therefore, failure to participate in academic activities in any given week is considered an absence.
 - Examples of participation in academic activities representing attendance would be
 - participation in a class chat or discussion board on an academic topic,
 - submission of a required assignment,
 - digital interaction with the professor on an academic topic,
 - and completion of a quiz or exam.

Administrative withdrawal results in removal from the course with a grade of “WA” or WF” determined by the point in the term and the academic performance. Students should consult the College catalog for complete details regarding withdrawals and the potential financial implications of a withdrawal.

Class Participation

Active class participation is expected of all . As future participants, it is expected that you will be interested in the course topics, and that you will share ideas, questions, and observations (from the field, if applicable) in each module. Only those participants who share ideas, comments, and observations in each module and demonstrate their knowledge of the course readings and content, will have the possibility of receiving a 9 or 10 for the class participation score.

Communicating Across the Curriculum:

Communicating across the curriculum requirements are satisfied by:

- | | |
|-----------------------------|-----|
| ● Module Assignments | 20% |
| ● Interdisciplinary Project | 20% |
| ● Canvas Discussions | 15% |

Diversity Statement

This course will highlight diversity in the following ways:

- use their knowledge of student diversity to affirm and support full participation and continued study of mathematics/STEM by all students;
- in nearly all discussions about teaching and learning;
- adherence to multi-modality lesson design that complies with learning standards and evidence within the written and presented lesson plan;
- demonstration of lessons that are interdisciplinary and subject-specific in accordance with: lessons, unit plans, and individual presentations, discussions about children with special needs, giftedness, and the evaluation procedures for diverse learners.
- diversity includes gender, culture, ethnicity, socioeconomic background, language, special needs, and mathematical learning styles.

E-mail Policy

It is mandatory that every candidate have a Molloy College e-mail account and check it daily. Information re: the programs as well as communication from course professors utilize this media. This Molloy e-mail account must be activated immediately. If not utilized within 30 days, the account becomes defunct and needs to be reinstated.

Information Literacy Statement

Information literacy is a set of abilities requiring individuals to "recognize when information is needed and have the ability to locate, evaluate, and use effectively the needed information."

Information literacy also is increasingly important in the contemporary environment of rapid technological change and proliferating information resources. Because of the escalating complexity of this environment, individuals are faced with diverse, abundant information choices--in their academic studies, in the workplace, and in their personal lives. Information is available through libraries, community resources, special interest organizations, media, and the Internet--and increasingly, information comes to individuals in unfiltered formats, raising questions about its authenticity, validity, and reliability. In addition, information is available through multiple media, including graphical, aural, and textual, and these pose new challenges for individuals in evaluating and understanding it. The uncertain quality and expanding quantity of information pose large challenges for society. The sheer abundance of information will not in itself create a more informed citizenry without a complementary cluster of abilities necessary to use information effectively.

Information literacy forms the basis for lifelong learning. It is common to all disciplines, to all learning environments, and to all levels of education. It enables learners to master content and extend their investigations, become more self-directed, and assume greater control over their own learning.

An information literate individual is able to:
Determine the extent of information needed;

Access the needed information effectively and efficiently;
Evaluate information and its sources critically;
Incorporate selected information into one's knowledge base;
Use information effectively to accomplish a specific purpose; and
Understand the economic, legal, and social issues surrounding the use of information, and access and use information ethically and legally.
American Library Association (Chicago: American Library Association, 1989).

This course will address Information Literacy in the following ways:

Recordings

As a student enrolled in courses offered by Molloy College, Rockville Centre, New York, I understand that classes may sometimes be audio or digitally captured for instructional purposes. THESE RECORDINGS ARE INTENDED ONLY FOR EDUCATIONAL PURPOSES AND WILL BE USED ONLY BY THE FACULTY AND STUDENTS ENROLLED IN THE COURSE. PLEASE NOTIFY YOUR INSTRUCTOR BY EMAIL IF YOU DO NOT CONSENT TO PARTICIPATION IN A DIGITAL RECORDING OF YOUR COURSE.

If no student elects to withhold his/her consent prior to [REDACTED], digital recording of the class will begin on [REDACTED]. Any student who has not contacted the professor prior to that date will be deemed to have consented to the recording. You may notify your professor by email at any time if you choose to revoke your consent.

Technology Statement

This course will highlight technology in the following ways:

- use appropriate technology to support the learning of mathematics including, but not limited to, computers and computer software, smart board, calculators, interactive television, tablets, distance learning, electronic information resources, and a variety of relevant multimedia
- use a variety of print and electronic resources
- submission of Canvas assignment

The Respectful Classroom

A major determinant of an effective teacher involves positive dispositions. It is expected that teacher will recognize and contribute to a mutually respectful classroom, both in word and deed. All cell phones and other hand-held or electrical devices **MUST** be turned off prior to the beginning of each class, put away, and kept off during class. An exception to this rule is if these devices are being used as part of the class. Teacher are not to leave class to receive or send telephone, text, other messages, or to use other devices.

Student Personal Counseling Center

The Student Personal Counseling Center (SPCC) is a confidential and free service available to all currently enrolled Molloy College students. Through individual counseling, wellness workshops, crisis intervention, support groups, and on-campus trainings, the SPCC aims to enhance wellness, and offer students a more meaningful, and successful college experience. If you are interested in scheduling an appointment, please call 516-323-3484 Monday-Friday from 9am-5pm. The SPCC is located in Public Square 030.

Zoom in the Classroom

Zoom is a video conferencing tool where instructors and students can meet online at the same time to interact in academic activities such as classroom lectures, student presentations, screen sharing and discussions. Zoom is often utilized with online synchronous courses at Molloy.

Minimizing Distractions During Synchronous Online Class

Zoom, or conferencing sessions, can be impacted by many different environmental or situational variables. Here are some strategies and suggestions for minimizing such impact:

- Students should mute their microphone when they are not speaking.
- Consider using virtual backgrounds, which display the participant but mask the area behind them.
- Students should not watch videos, listen to music, or use other applications (other than note taking apps) while attending class. Doing so could not only distract the class but lead to a degradation in computer performance that may affect the student viewer experience.
- Student can use the chat feature in Zoom to communicate with the entire class and or the instructor but should not be participating in one-to-one chats with their peers during class.

Student Reminders and Etiquette

- Just as in an on-campus classroom, it is important to make the best virtual impression during a Zoom meeting.
- You may be viewable, or heard, by the entire class during a Zoom session and should conduct yourself accordingly.
- Classes may be recorded by the Instructor (see the **Recordings** section of this course outline for further information).
- Student recordings are only permitted if all participants are fully informed that the recording will take place and all participants consent to being recorded. Please refer to the Molloy Student Handbook for more details.
- Dress as if you are in a classroom setting.
- Students are expected to uphold Molloy College's Academic Honor Pledge.
- Abide by the Civility Policy found in the Molloy Student Handbook.

Covid-Related Protocols

Molloy College has a continuing commitment to providing reasonable accommodations for any student with a documented disability or chronic illness. Like so many things this semester, the need for accommodations and the process for arranging them may be altered by the COVID-19 changes we are experiencing and the safety protocols currently

in place. Students who may need accommodations in order to fully participate in this class are urged to contact Disability Support Services (DSS/STEEP) at dss@molloy.edu, as soon as possible.

Disinfecting Protocol

All members of the Molloy Community are expected to contribute to a healthy environment. Therefore, disinfectants, or chemicals that kill germs on surfaces, will be available in all instructional spaces. Upon arrival in an instructional space, please take a disinfectant wipe, wipe down the desktop and any hard surfaces in your area (keyboard, mouse, etc.). At the conclusion of your time in that space please repeat the process, wiping down surfaces with a fresh wipe. Wipes should be properly disposed in the room receptacle.

Vaccinations and Face Covering

All students are required to be vaccinated or have an approved exemption or accommodation. All individuals who are exempt from a COVID-19 vaccinations must wear face coverings. If you are required to wear a face covering it must cover both the nose and mouth must be worn at all Molloy locations while indoors. **PLEASE NOTE:** *The general face covering policy may change throughout the semester as determined by the evolving nature of the pandemic.*

Accommodations

Students seeking COVID 19 related accommodations should contact the Center for Access and Disability at access@molloy.edu.