

Long Island By the Numbers: *How is L.I. Doing in 2025?*

Prepared By:

Andrew Manitt, **Research Director**

Neal Lewis, **Executive Director**

Demosthenes Maratos, **Communications Director**

Sustainability Institute Molloy University

Released April 2025



Overview

2

Long Island by the Numbers is a collection of facts and indicators that the *Sustainability Institute at Molloy University* has gathered from credible, authoritative sources to provide a snapshot of Long Island's performance as a region and track whether our Island is moving in the right direction.

Noteworthy Facts

- Long Island's population remains stable at just under 3 million. Long Island becoming more diverse, as the percentage of Hispanic and Asian residents has increased significantly over the last 2 decades.
- Nassau and Suffolk Counties are among the top five most economically productive counties in NY State. The GDP of Long Island is greater than 20 U.S. States.
- Unemployment remains lower on Long Island than in NY State and the nation at large. Our Labor Participation Rate is higher.
- Average weekly wages are slightly higher than the U.S. average. Median household income is significantly higher.
- Our public schools' graduation rates are higher than the rest of NY State and the percentages of Nassau and Suffolk students graduating with Advanced Regents Diplomas are well above any other county in the State.
- Long Island has a lower crime rate than the rest of New York State, even when NYC is excluded.
- Public schools are highly segregated and inequitable, 69% of Hispanic students and 19% of Black students attend the approximately 10% of lowest-wealth districts, but only 9% of white students do.
- The proportion of multi-family and rental housing on Long Island is low compared to similar suburban counties in the NY metro area. Higher housing costs continue to contribute to our high cost of living and the number of families who are "housing burdened."
- Long Island has higher rates of death and injury from motor vehicle crashes than the rest of New York State.
- PSEG-Long Island is surpassing State clean energy transition goals for solar PV and heat pump installations but lags on electric vehicles and energy storage.
- About 59% of Long Island homes use oil for heating, compared to less than 9% nationwide and 33% in NYS. Home heating oil is more expensive and more polluting than alternatives.

Population and Economics

3

Nassau	1,381,715
Suffolk	1,523,170
Total	2,904,885

- Larger than 15 U.S. States

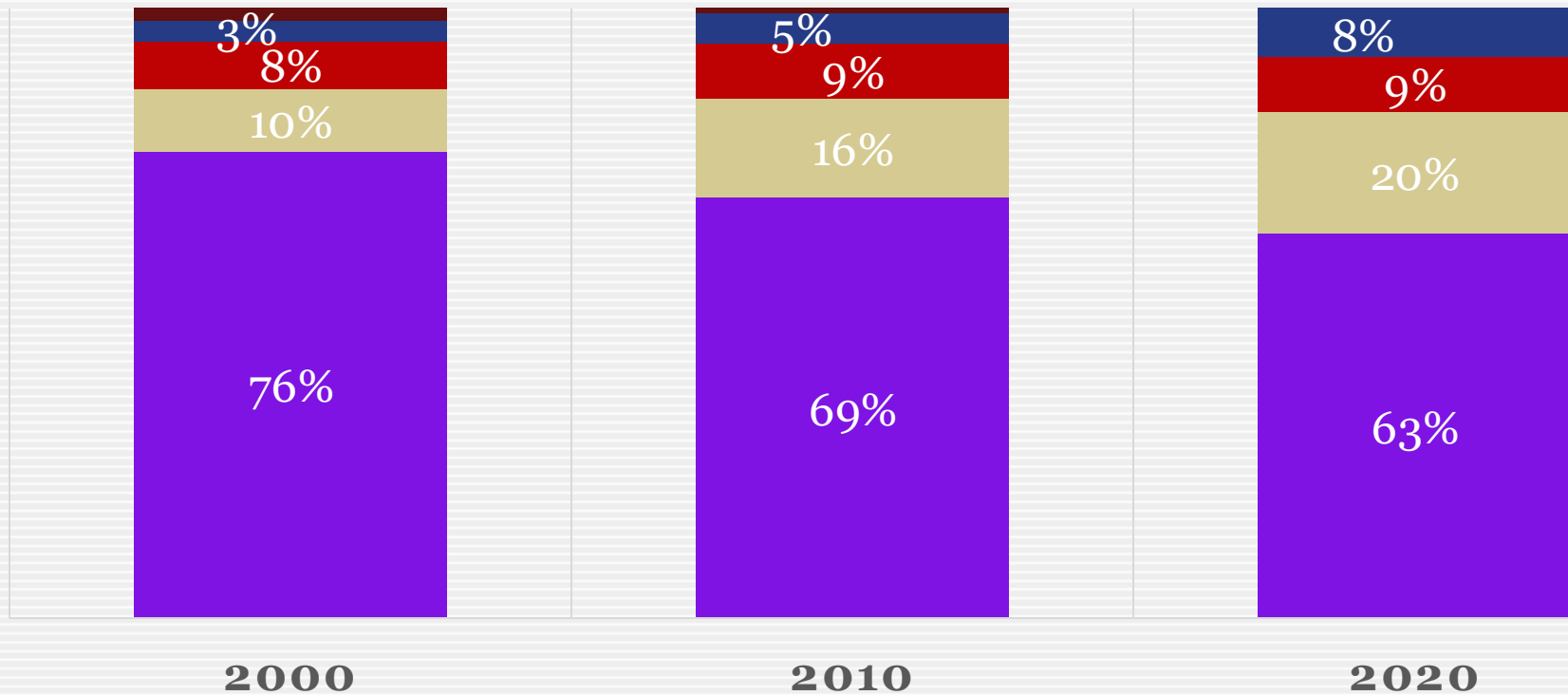
Estimated July 1, 2023
Source: census.gov



Long Island's Increasing Diversity

4

■ White, non-hispanic ■ Hispanic/Latino ■ Black, non-hispanic
■ Asian non-hispanic ■ Other non-hispanic



Source: US Census

NYS Gross Domestic Product by County

5

County	2023 GDP (in chained 2017 dollars)	Population
New York	797,092,203,000	1,597,451
Kings (Brooklyn)	110,580,419,000	2,561,225
Queens	107,263,194,000	2,252,196
Suffolk	105,751,656,000	1,523,170
Nassau	100,089,673,000	1,381,715
Westchester	90,241,804,000	990,817
Erie	62,943,074,000	946,147
Monroe	48,916,577,000	748,482
Bronx	44,029,337,000	1,356,476
Albany	35,778,797,000	316,659

Nassau/Suffolk GDP ~\$205 billion in 2023 - greater than 20 U.S. states.

Source: Bureau of Economic Analysis, U.S. Dept. of Commerce

Unemployment Rate (2024 Average)

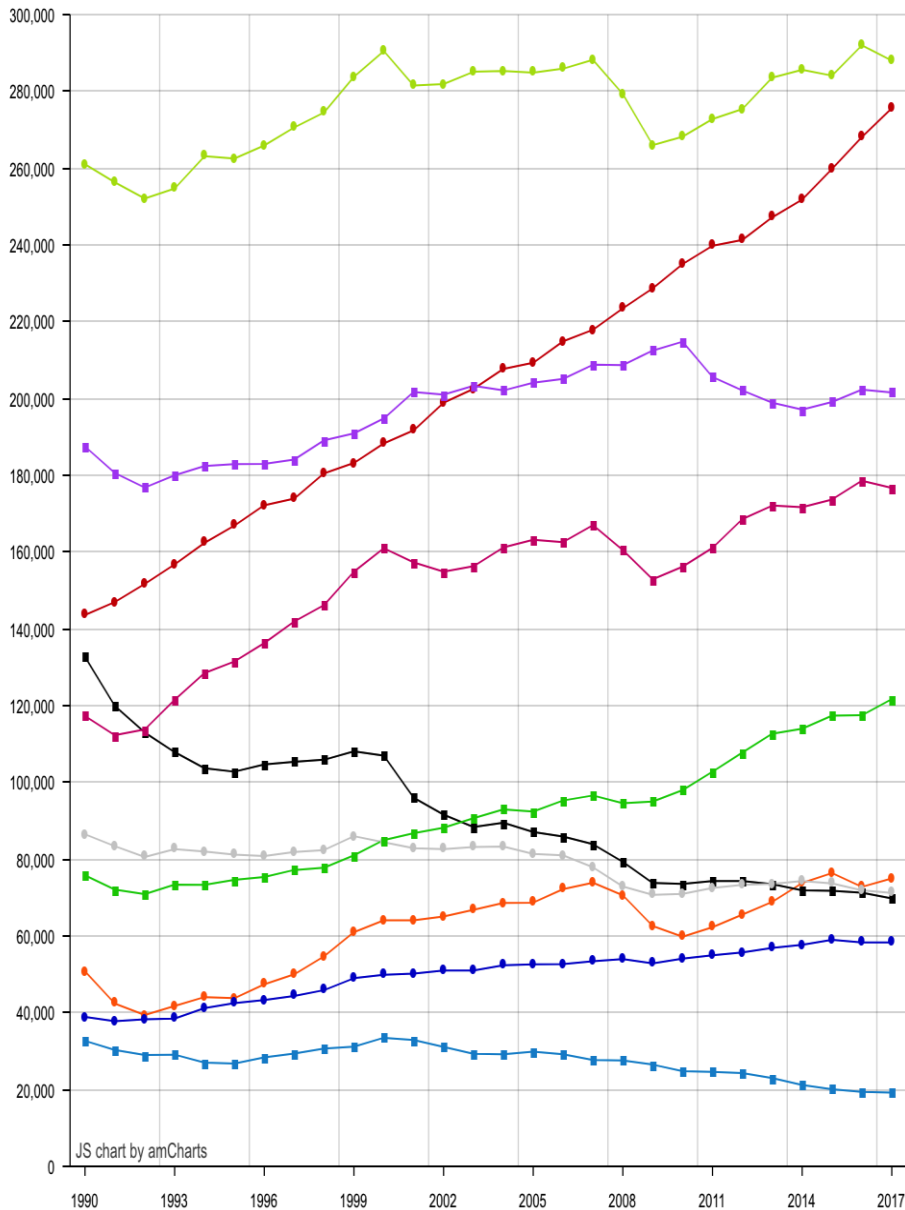
Nassau	3.2%
Suffolk	3.5%
N.Y. State	4.3%
U.S.	4.0%

*Source: U.S. Bureau of Labor Statistics
bls.com
Local Area Unemployment Statistics
(LAUS)*

Labor Force Participation Rate (2021 Average)

Nassau	65.2%
Suffolk	65.8%
N.Y. State	62.8%
U.S.	63.0%

*Source: U.S. Census
American Community Survey
www.census.gov/quickfacts*



Transportation/ Trade

Health/Education

Government

Professional/Business

Hospitality

Construction

Financial

Manufacturing

Other Services

Information

2017

2023

21% 19%

20% 22%

15% 15%

13% 13%

9% 10%

6% 6%

5% 5%

5% 5%

4% 4%

1% 1%

Long Island's Top Employers in 2016

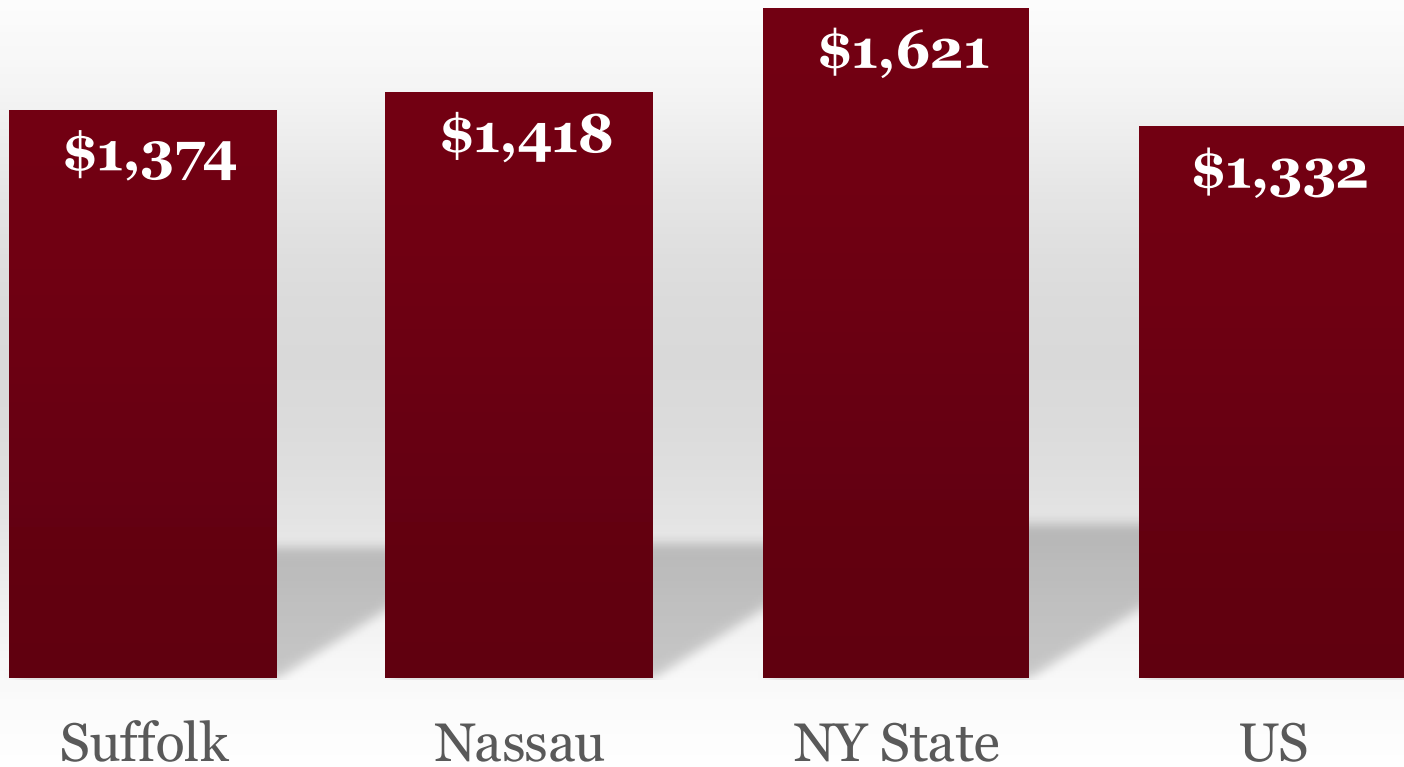
8

- 1. Northwell Health** - 31,153 (includes Queens)
- 2. New York State** - 20,304 (includes SUNY Campuses & Stony Brook Hospital)
- 3. Catholic Health Services** - 17,000
- 4. Nassau County** - 16,784 (includes Nassau University Medical Center, A. Holly Pattern Extended Care Facility and five federally qualified health care centers)
- 5. Federal Government** - 16,391 (includes 9,200 postal workers)
- 6. Suffolk County** - 11,075
- 7. Stop & Shop** - 8,100
- 8. Winthrop-University Hospital** - 7,700
- 9. Long Island Rail Road** - 6,960
- 10. Walmart** - 5,056

Source: Newsday

Average Weekly Wages — Q2 2023

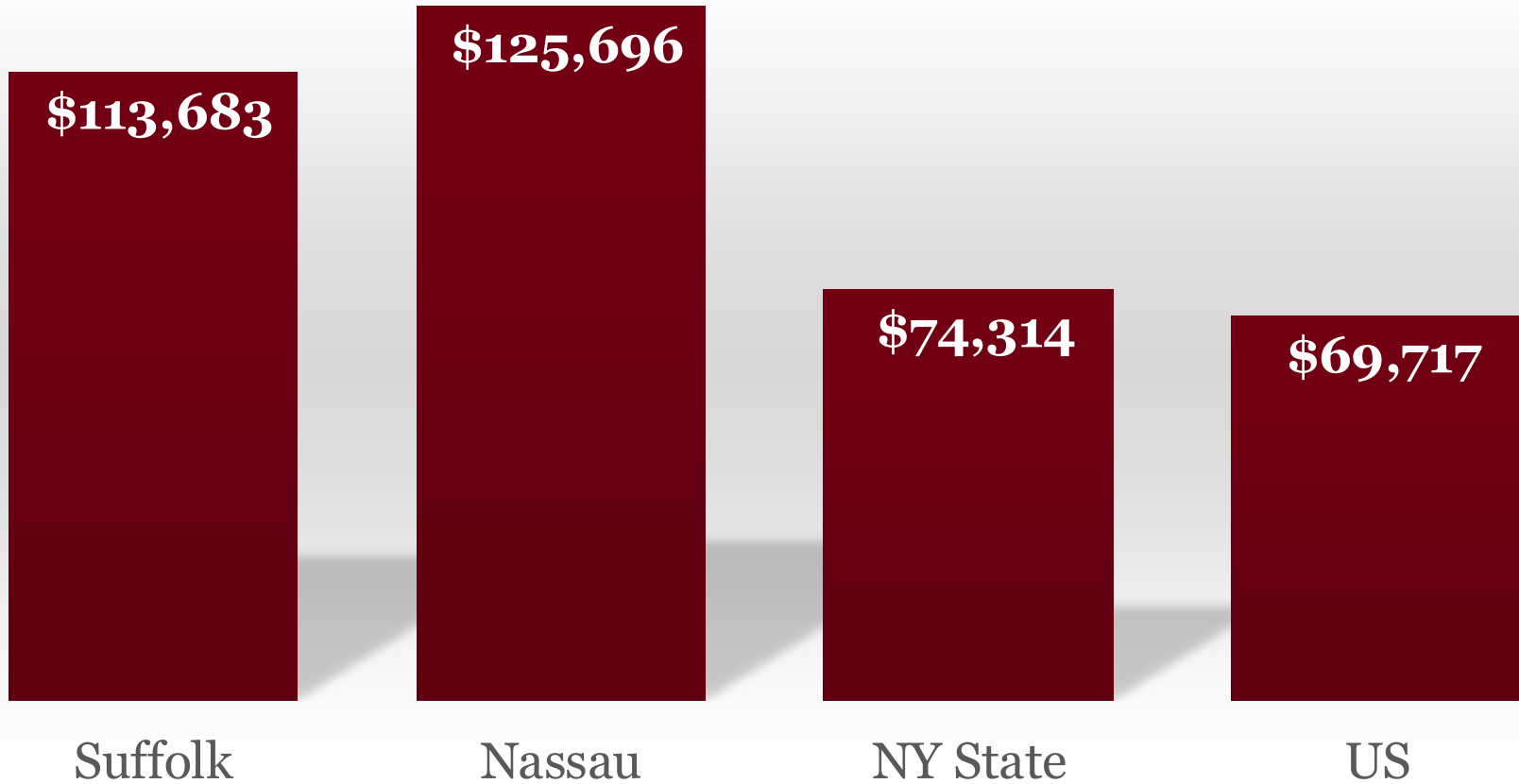
9



Source: U.S. Bureau of Labor Statistics

Median Household Income

10

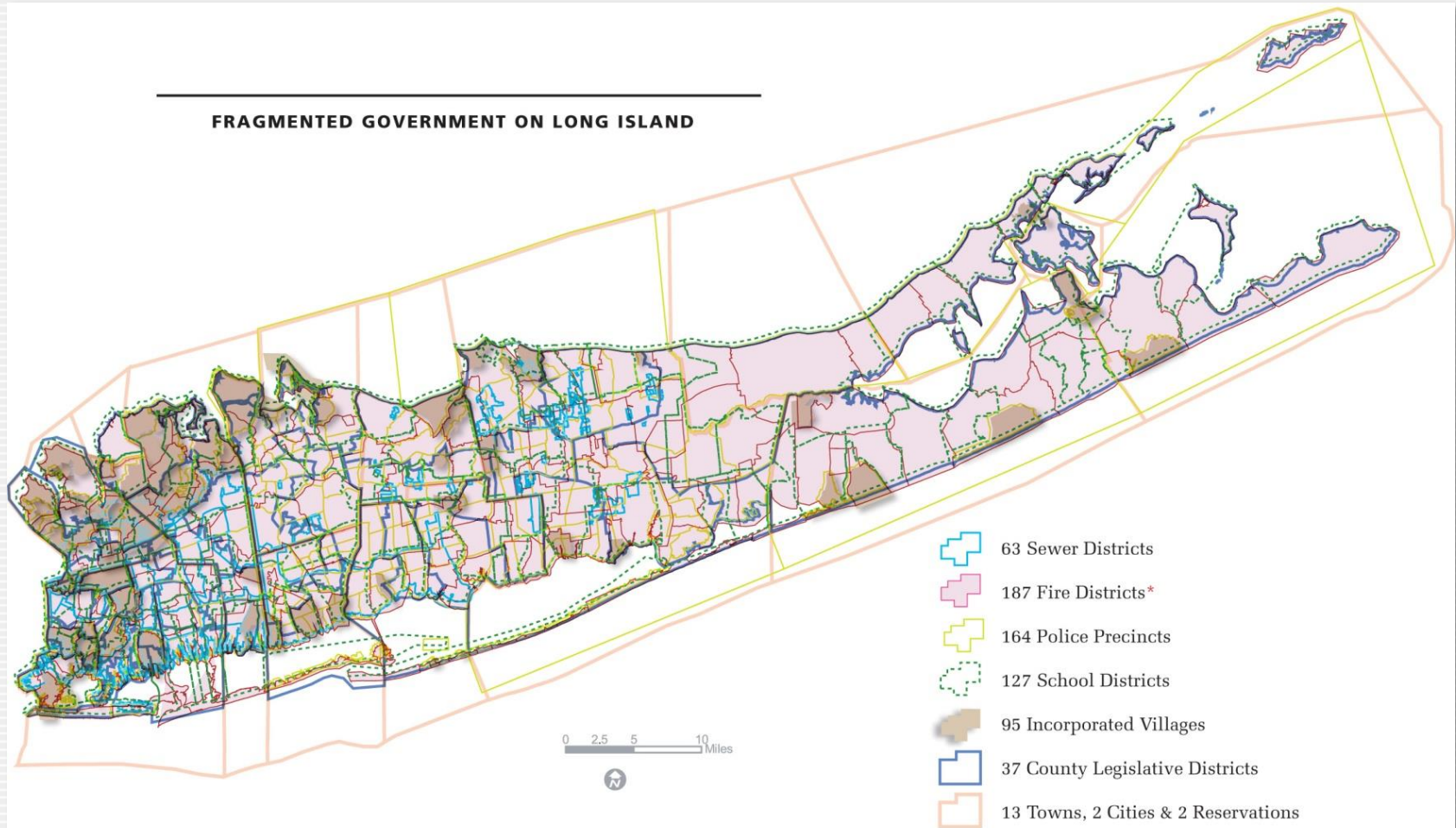


Source: U.S. Census – ACS 2021

Governance and Taxation

11

FRAGMENTED GOVERNMENT ON LONG ISLAND



Sources: U.S. Census Bureau; Nassau County Planning Commission (Basemap copyright 2003 County of Nassau, NY); Long Island Regional Planning Board; NYS Office of Real Property Services

Local Governments & Districts

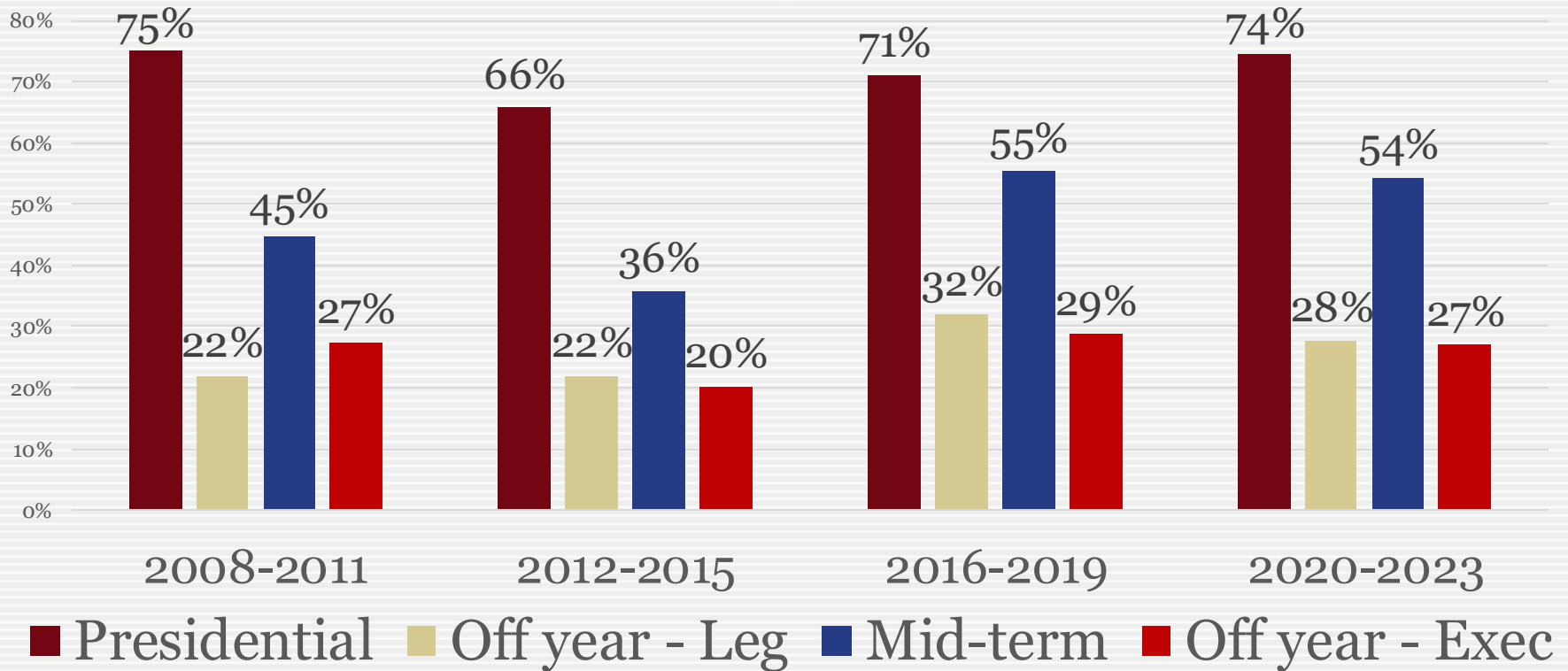
12

- 2 - Counties
- 2 - Cities
- 13 - Towns
- 96 - Villages
- 26 - Sewer Districts
- 41 - Police Districts
- 54 - Water Districts
- 83 - Garbage Districts
- 110 - Library Districts
- 125 - School Districts
- 227 - Fire Districts



Suffolk County Voter Turnout

13



Note: Nassau County Board of Elections does not post turnout percentages on their website

Source: Suffolk County Board of Elections

U.S. counties with the highest average property taxes in 2018

14

1. Westchester, New York: \$17,392
2. Rockland, New York: \$12,925
3. Essex, New Jersey: \$12,161
4. Bergen, New Jersey: \$11,771
- 5. Nassau, New York: \$11,708**
6. Union, New Jersey: \$11,075
7. Fairfield, Connecticut: \$10,754
8. Morris, New Jersey: \$10,507
9. Passaic, New Jersey: \$9,988

- ~12. Suffolk, New York: \$9,598**

Sources: CBS News reporting on data from Attom Data Solutions & Taxfoundation.org

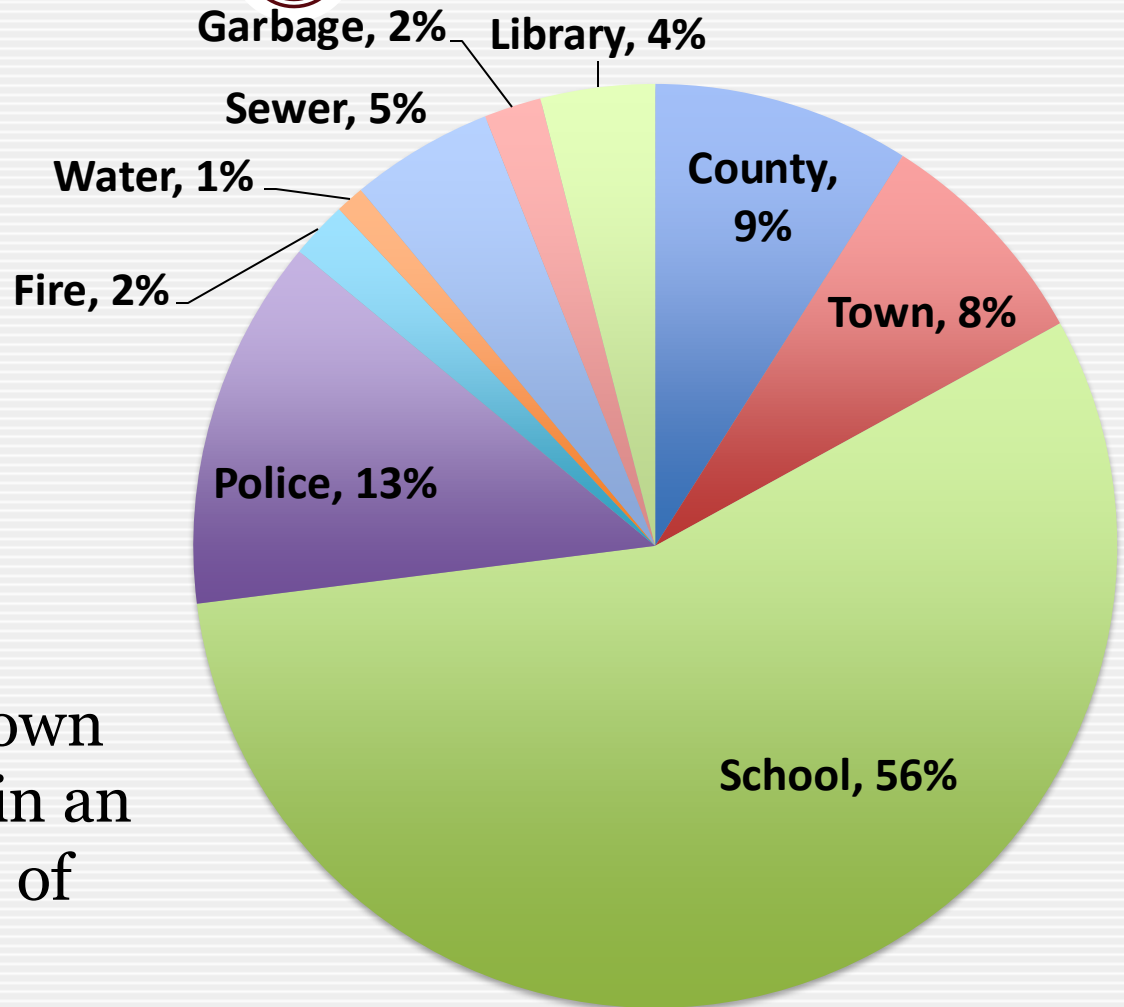
U.S. counties with the highest average property taxes in 2021 (5-year estimate)

15

- Bergen, New Jersey: >\$10,000
- Essex, New Jersey: >\$10,000
- Hunterdon, New Jersey : >\$10,000
- Morris, New Jersey: >\$10,000
- Passaic, New Jersey: >\$10,000
- Union, New Jersey: >\$10,000
- **Nassau, New York: >\$10,000**
- New York, New York: >\$10,000
- Rockland, New York: >\$10,000
- Westchester, New York: >\$10,000
- Falls Church (city), VA: >\$10,000
- **~12. Suffolk, New York: \$9,911**

Division of Property Taxes

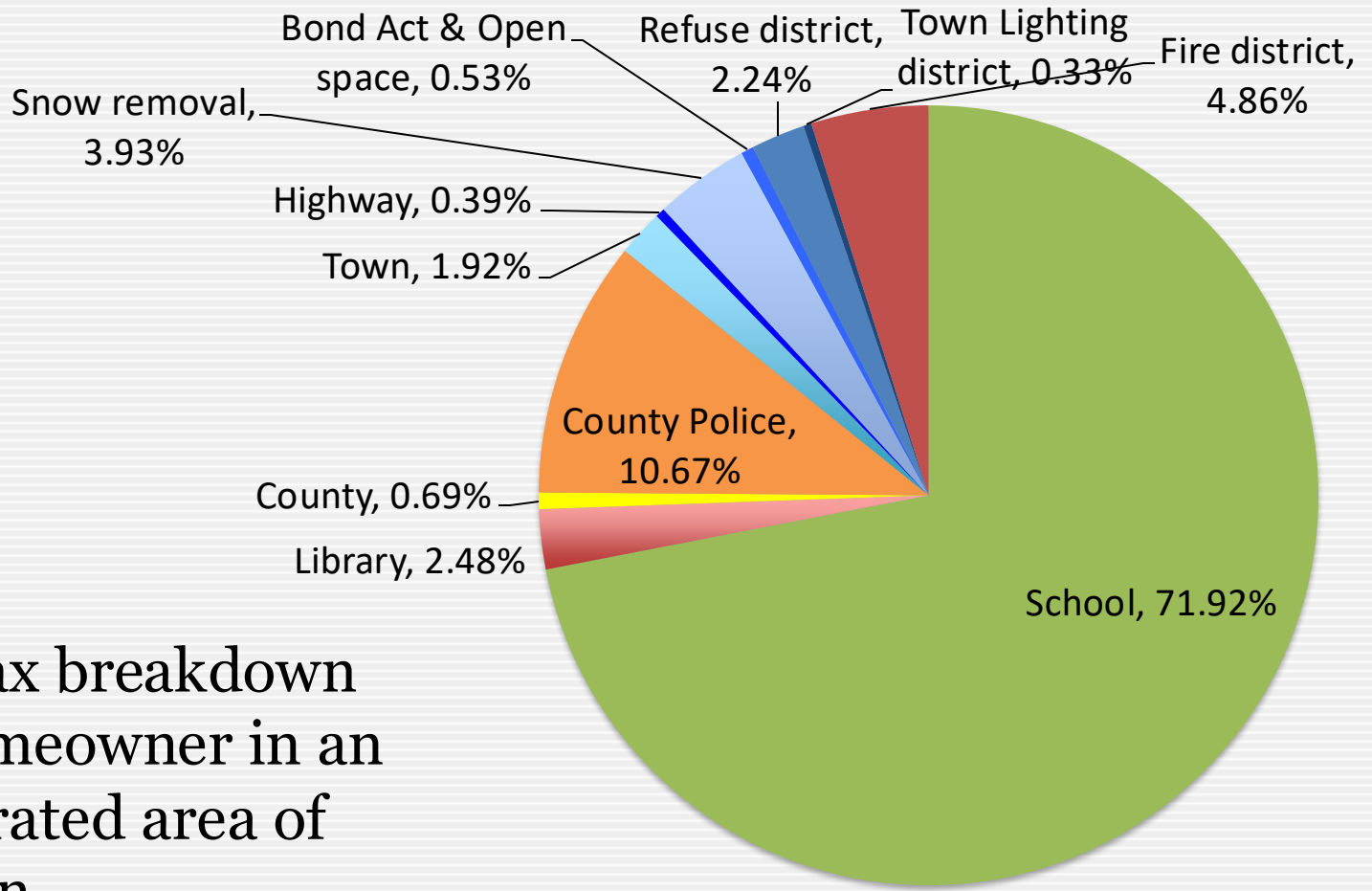
16



Property tax breakdown for one homeowner in an unincorporated area of North Hempstead

Division of Property Taxes

17



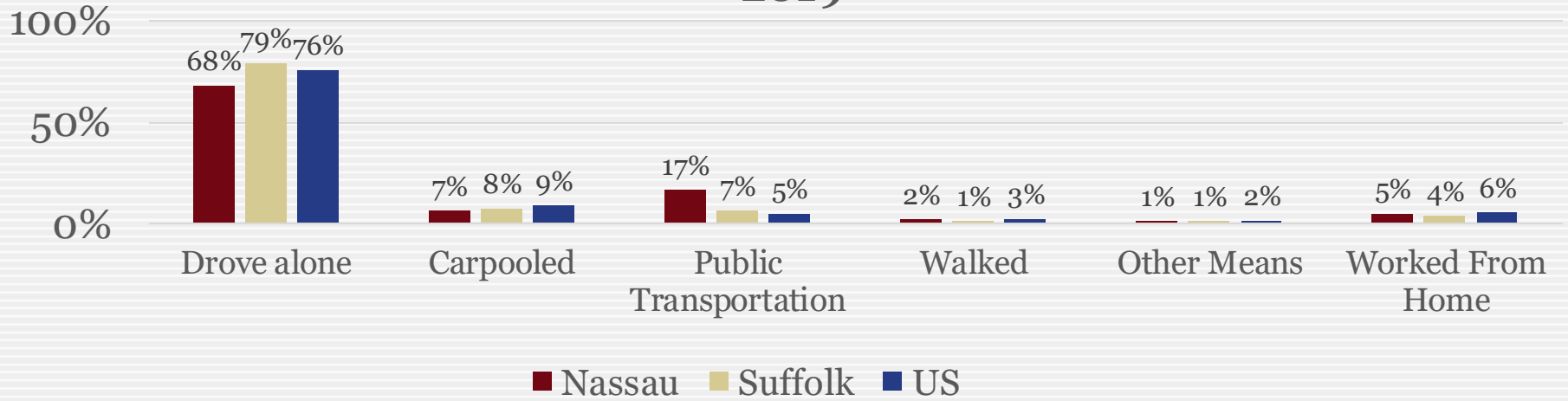
Property tax breakdown
for one homeowner in an
unincorporated area of
Brookhaven

Transportation

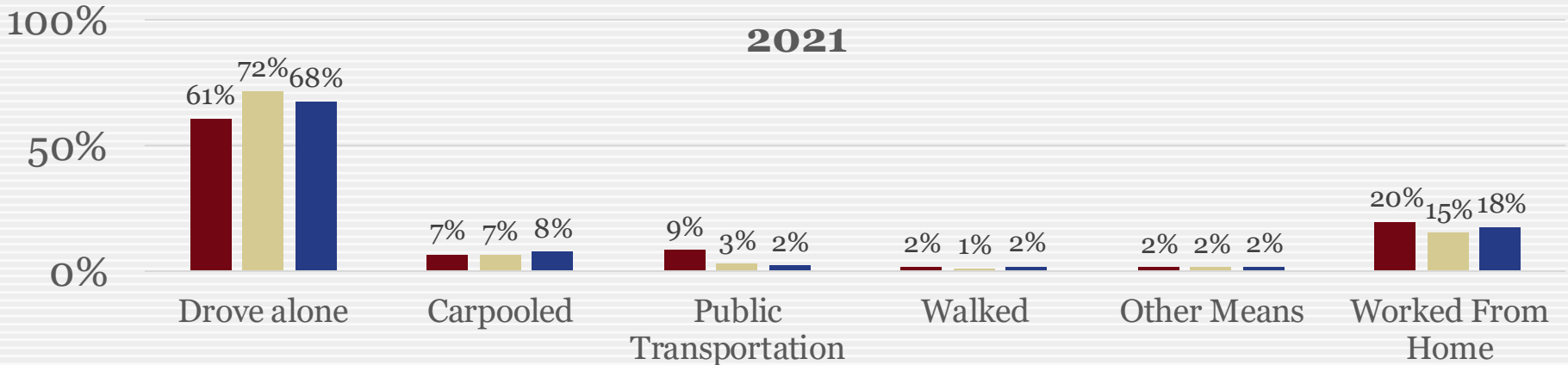
How We Get to Work

18

2019



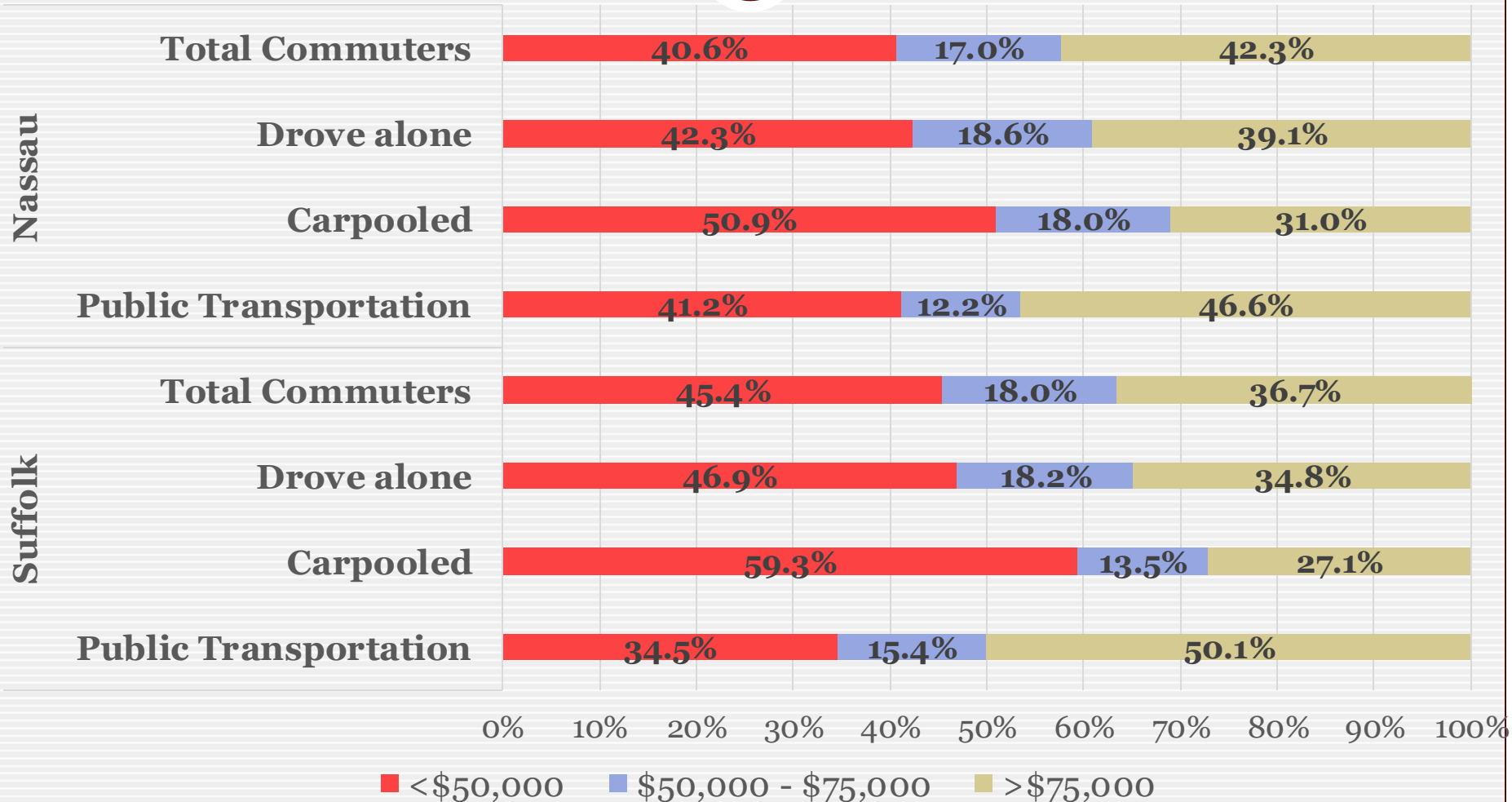
2021



Transportation

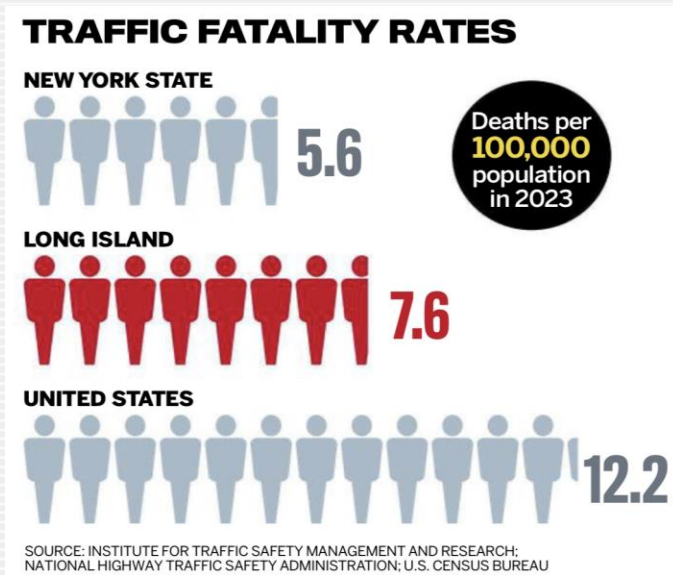
How We Get to Work—by Income

19



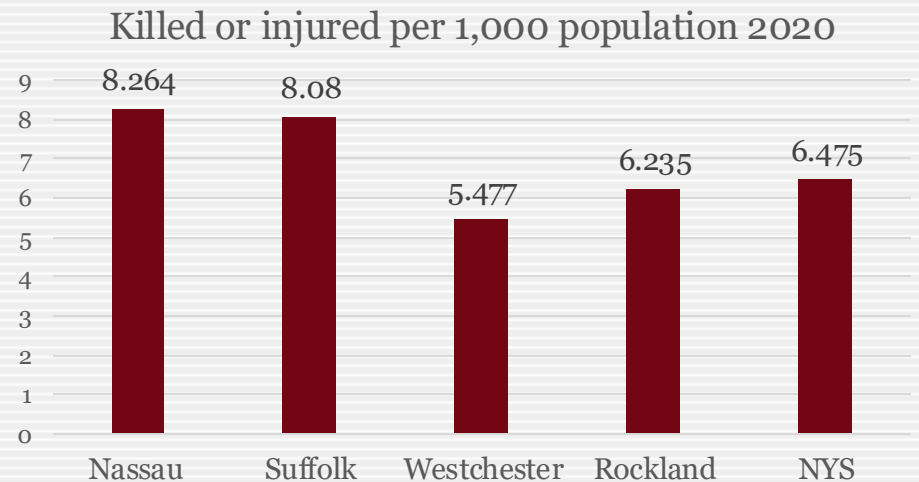
Transportation Traffic Injuries and Deaths

20



Source: Newsday

Long Island Leads the State in the Rate of Death and Injury from Motor Vehicle Crashes



Source: Institute for Traffic Safety Management & Research

Pedestrian Fatalities

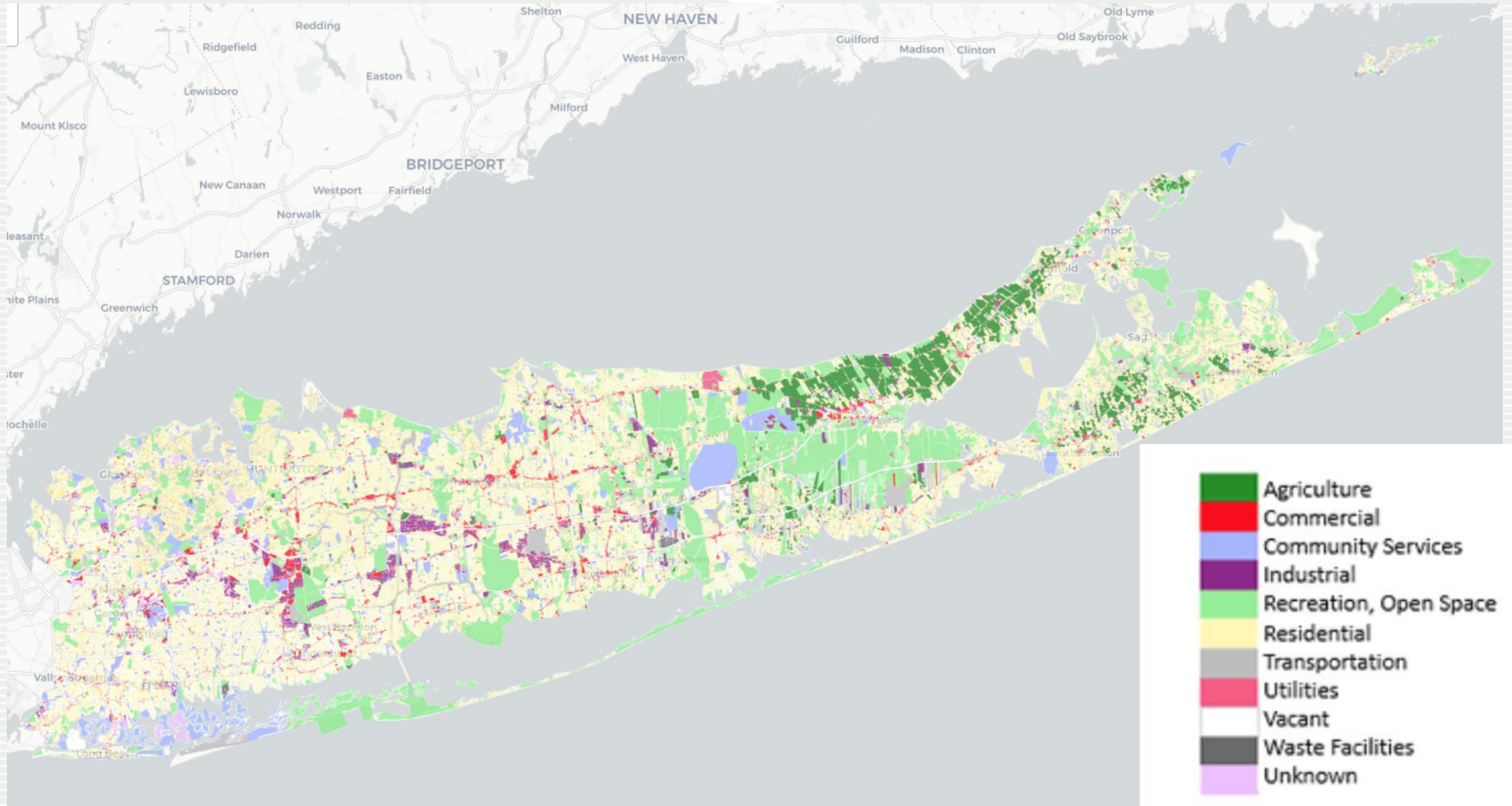
Pedestrians are killed in motor vehicle crashes in Nassau and Suffolk at the highest rate of any counties in New York State.

In 2020, Long Island made up 15% of NY State's population, but it accounted for 23% of all pedestrians killed in crashes.

Source: Institute for Traffic Safety Management & Research

Land Use

21



Source: Long Island Index Map

Land Use

22

- 50% Residential
- 20% Recreation/Open Space
- 8% Institutional/Community Service
- 8% Vacant
- 5% Agricultural
- 4% Commercial
- 2% Industrial
- 2% Transportation

Source: Long Island Index Map

Housing Stock

23

- 77.9% - Single-Family Detached
- 21.4% - Attached & Multi-Family
- 00.6% - Mobile homes, boats, etc.

- 83.4% - Owner Occupied
- 16.6% - Renter Occupied

Source: US Census Bureau– ACS 2023

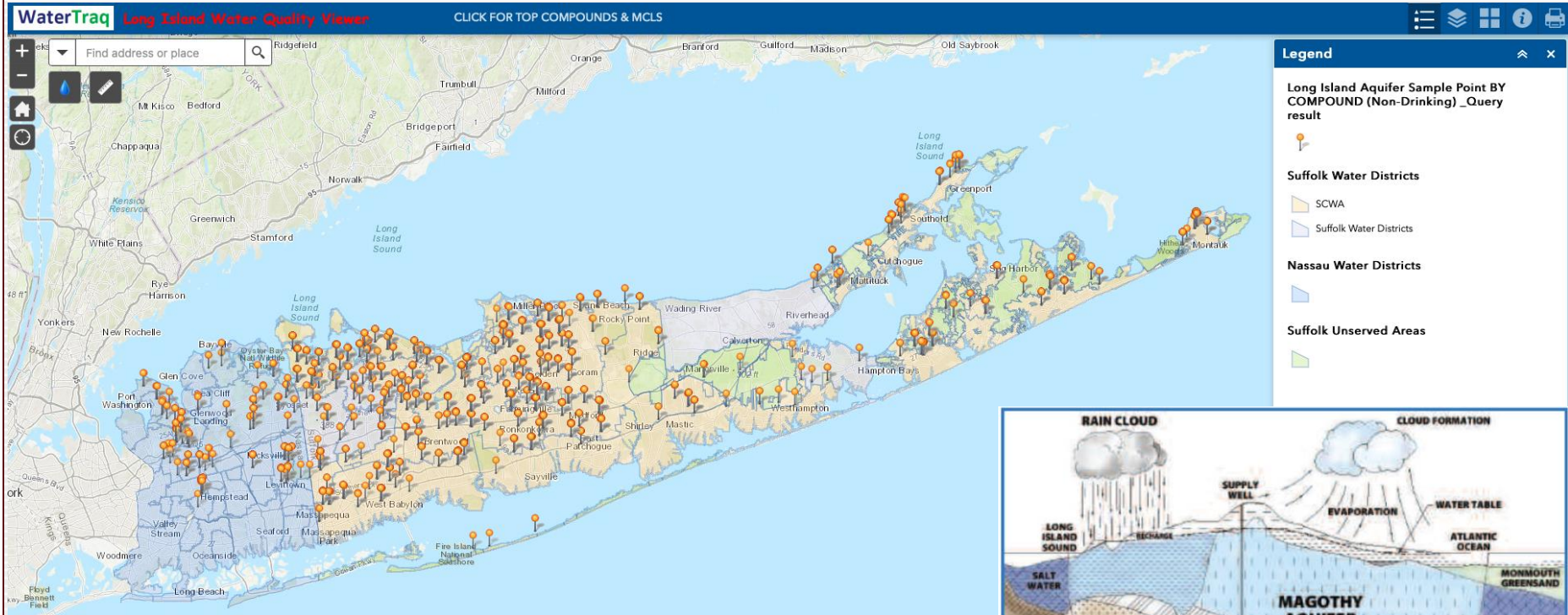
Protecting Groundwater

On Long Island, about **\$2 billion** has been spent by county, state and local governments since 1997 to buy and preserve over 60,000 acres of open space. Most of this money has been spent with the goals of either protecting the quality of Long Island's drinking water or preserving farmland.



Groundwater Concerns

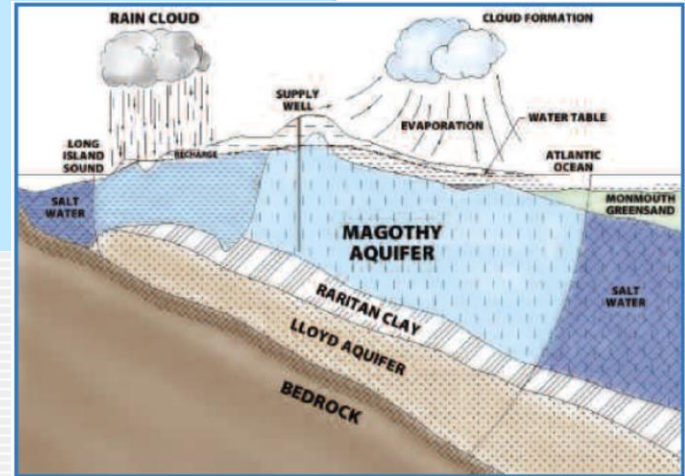
25



Detections of 1,4-Dioxane in untreated groundwater.

Detection in groundwater does not mean the compound is found in drinking water.

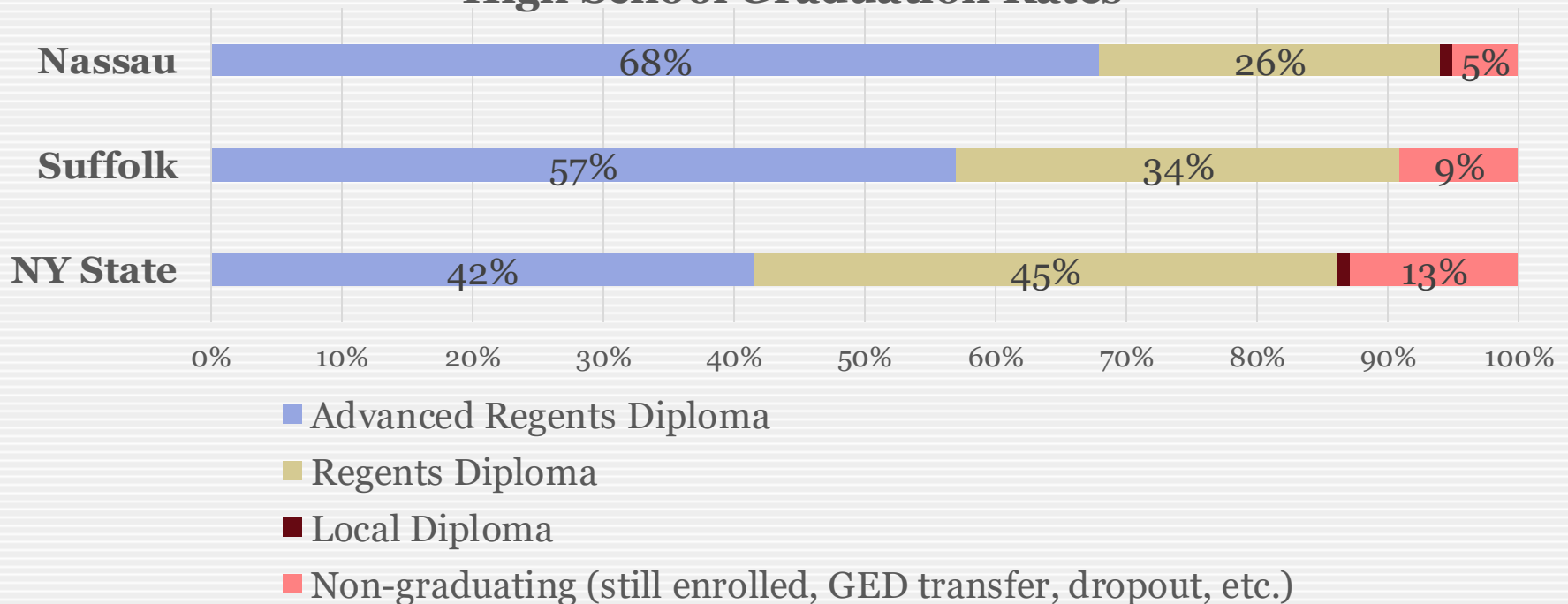
Source: Long Island Commission for Aquifer Protection



Education

26

High School Graduation Rates



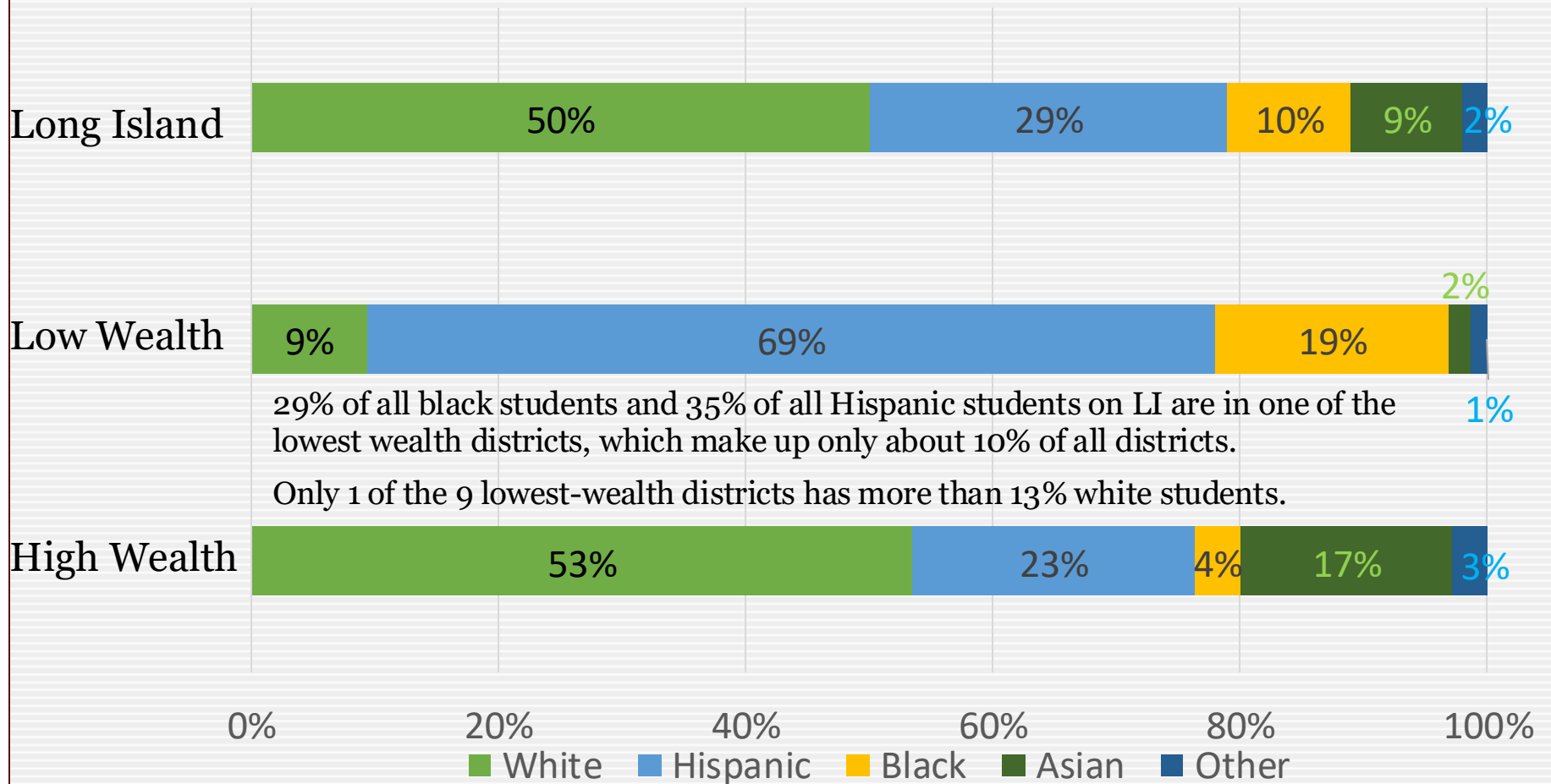
Science Talent Search — Every year from 1979 through 2024, at least one Long Island high school student has been a finalist in the oldest and most prestigious science competition in the U.S.

Advanced Placement and International Baccalaureate Exams

- The Passage Rate for Long Island Students on Advanced Placement and International Baccalaureate exams in 2022 was 68.6%. This is considerably higher than the rate for New York students Statewide was 29.6%, second only to Massachusetts at 30.5%.

Segregation in Long Island Schools (2018-2019)

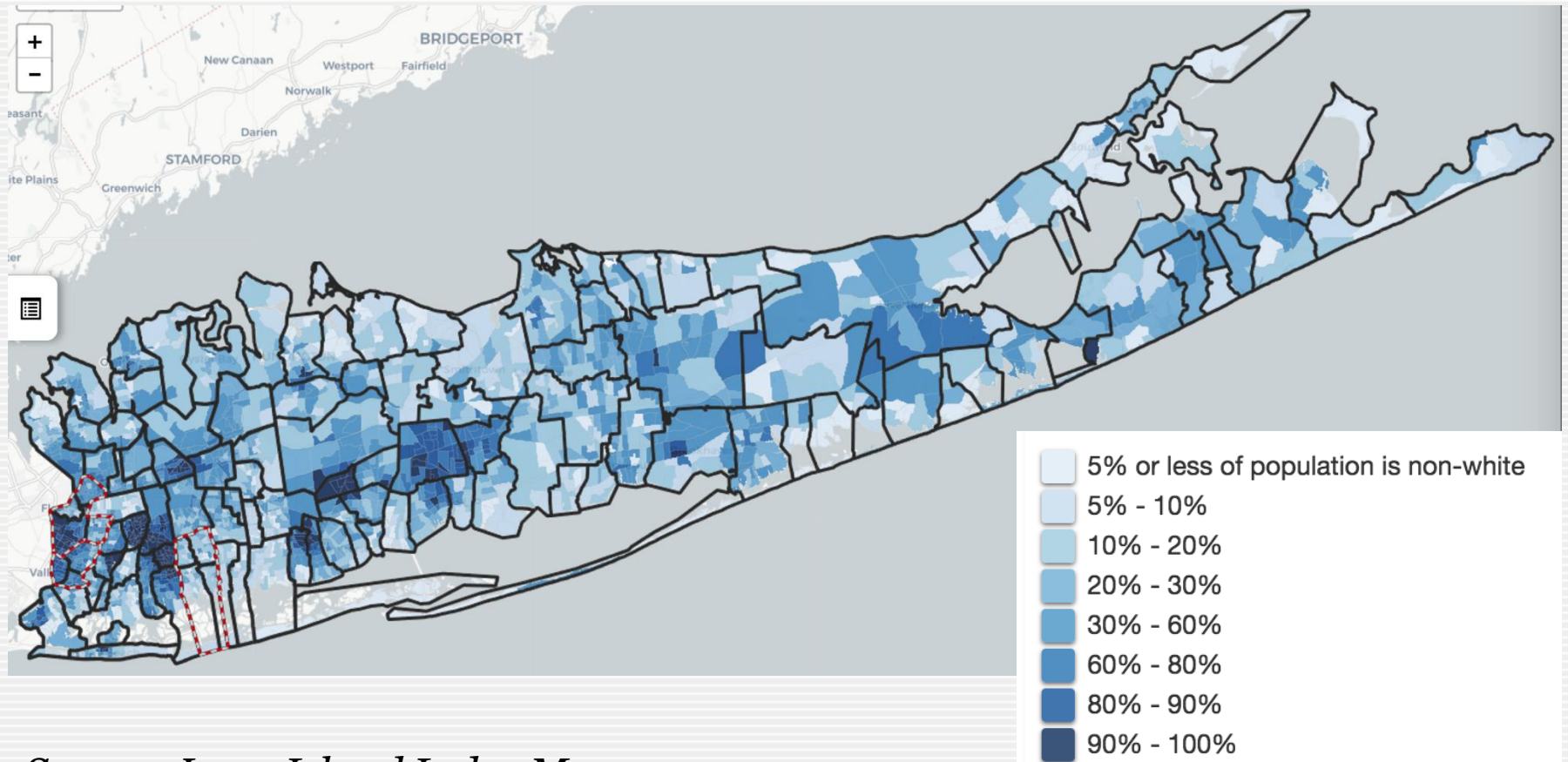
28



Source: LONG ISLAND EDUCATION: COSTS AND OUTCOMES 2018 & NYSED

Segregation of LI School Districts

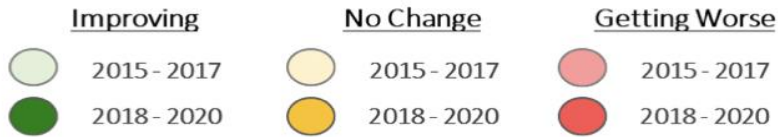
29



Source: Long Island Index Map

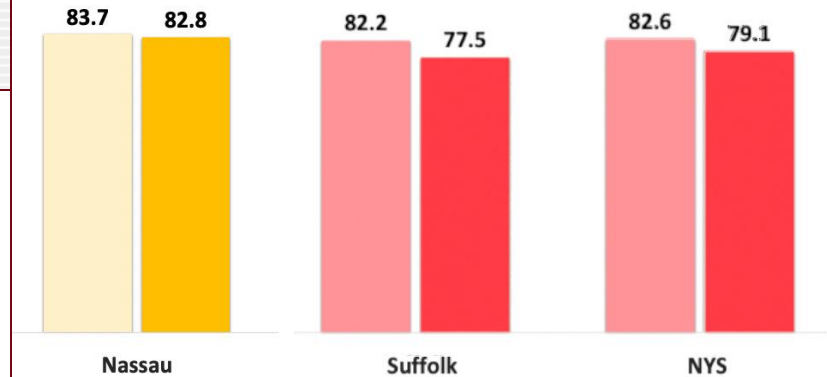
Healthcare

30



Access to Medical Care

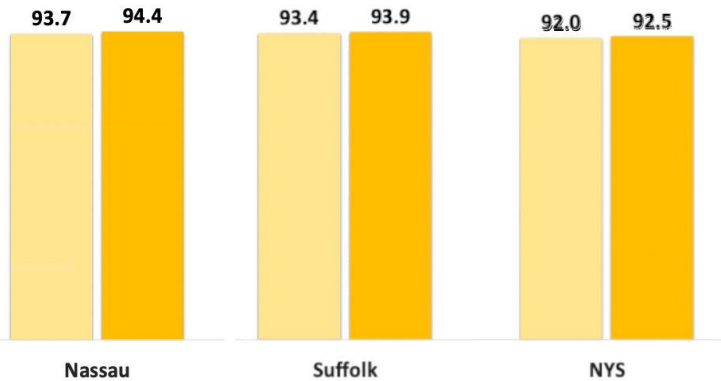
Adults who have a regular health care provider, age-adjusted percentage



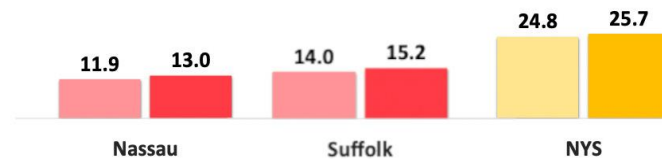
Healthcare Access

Insurance Coverage

Percentage of adults aged 18-64 years with health insurance



Percentage of population with Medicaid/means-tested public coverage



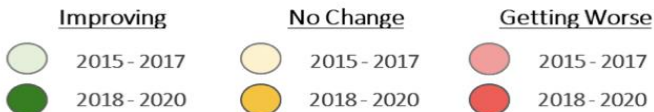
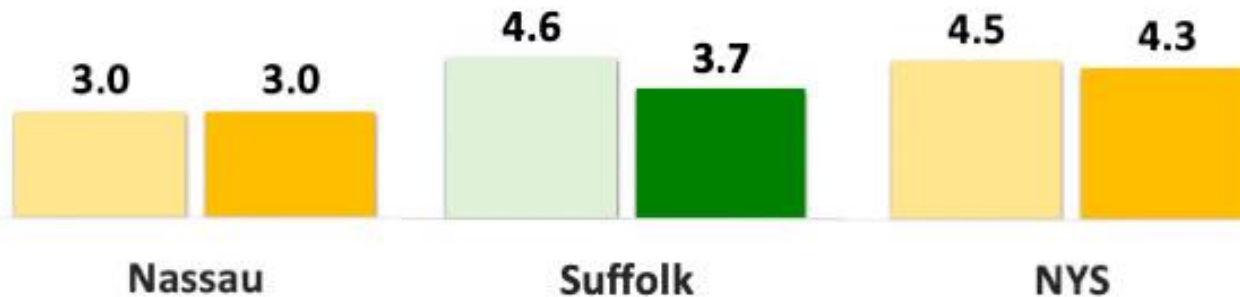
Source: Northwell Health Community Health Needs Assessment 2022-2024

Healthcare

31

Infant Mortality Rate

Mortality rate per 1,000 live births - Infant (<1 year)



Source: Northwell Health Community Health Needs Assessment 2022-2024

Long Island's Top Employers in 2016

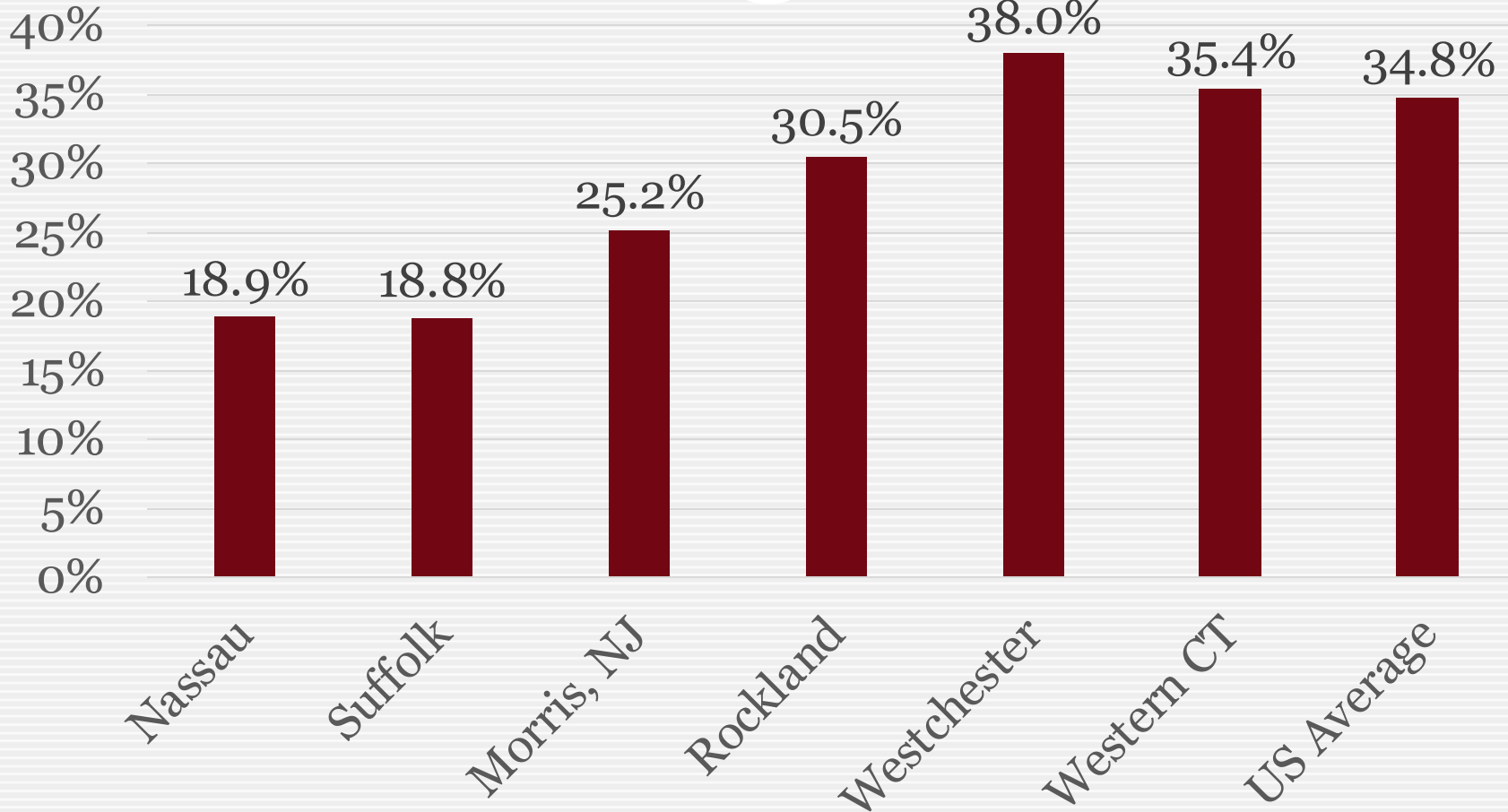
33

- 1. Northwell Health** - 31,153 (includes Queens)
- 2. New York State** - 20,304 (includes SUNY Campuses & Stony Brook Hospital)
- 3. Catholic Health Services** - 17,000
- 4. Nassau County** - 16,784 (includes Nassau University Medical Center, A. Holly Pattern Extended Care Facility and five federally qualified health care centers)
- 5. Federal Government** - 16,391 (includes 9,200 postal workers)
- 6. Suffolk County** - 11,075
- 7. Stop & Shop** - 8,100
- 8. Winthrop-University Hospital** - 7,700
- 9. Long Island Rail Road** - 6,960
- 10. Walmart** - 5,056

Source: Newsday

Share of Rental Units 2023

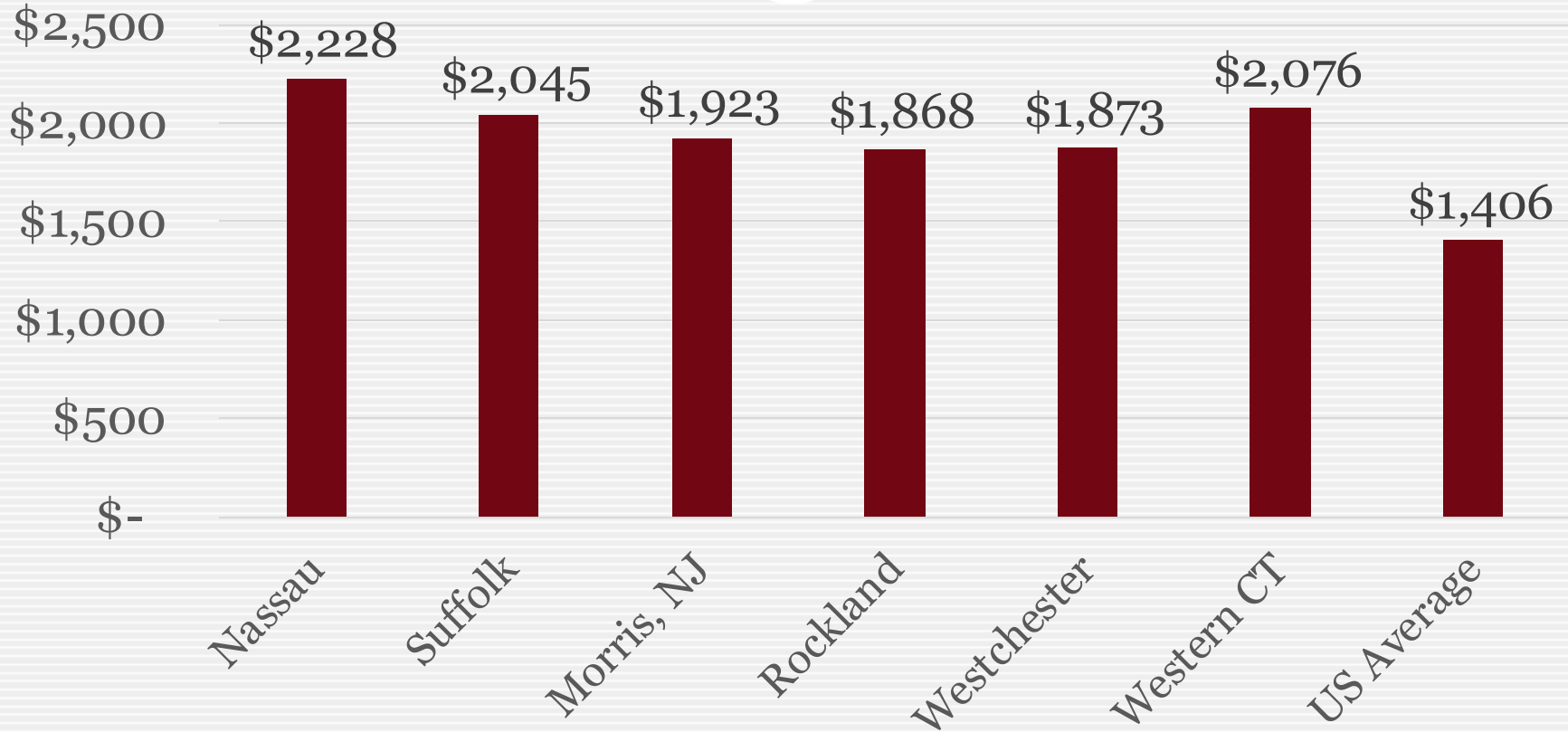
34



Source: US Census Bureau— ACS 2023

Median Gross Rent 2023

35



Median gross rent includes all rental housing units, including studio and one-bedroom apartments. According to HUD, the Fair Market Rent for a two-bedroom apartment on Long Island in 2025 is **\$2,586**.

Source: US Census Bureau— American Community Survey 2023

Housing Cost Burdened on Long Island

36

	Above 30% of Income	Above 50% of income
Nassau		
Owner	37.2%	16.6%
Renter	52.8%	29.0%
Suffolk		
Owner	39.1%	17.5%
Renter	56.1%	31.8%
Long Island	41.4%	19.7%

Source: *Housing Affordability in New York State*, NYS Comptroller, June 2019

Poverty and People Who Are Working Poor

37

United Way ALICE Study

Asset Limited, Income Constrained, Employed

Long Island Household Survival Budget 2018

Households on Long Island Below ALICE Threshold	302,988
Percent of households Below ALICE Threshold	33%
ALICE %	26.5%
Poverty %	6.5%

Family of four (two adults, one infant and one preschooler)

Household Survival Annual Budget:	\$93,252
Household Survival Hourly Wage:	\$46.63

Single adult

Household Survival Annual Budget:	\$26,916
Household Survival Hourly Wage:	\$13.46

Criminal Justice

38

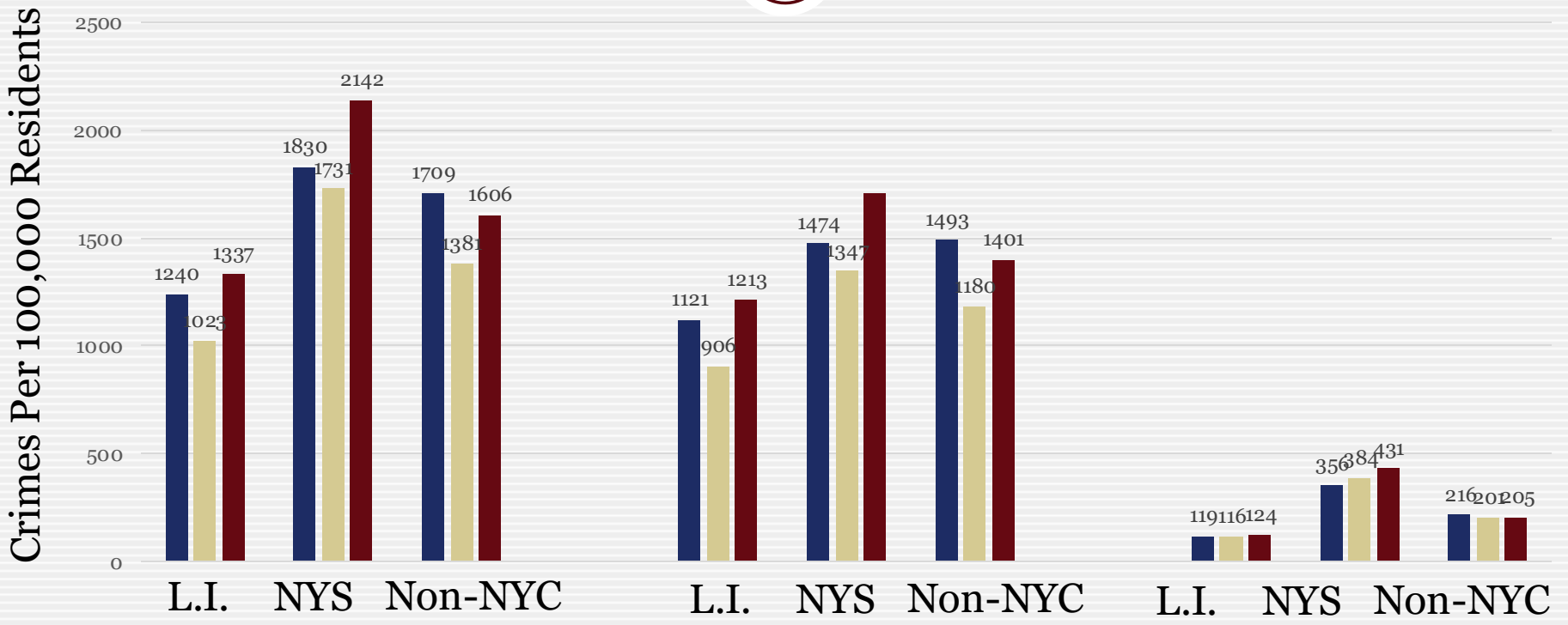
- Including State*, County, Town, and Village agencies, there are approximately **6,500** full-time, sworn law enforcement officers serving Nassau and Suffolk.
- This makes a ratio of **2.25 police per 1,000 residents**. This is somewhat lower than the national average of about 2.8 police per 1,000, and considerably lower than the New York State average of 4.3. (NYS has the highest ratio of any state in the Union.)

* May not include NY State Troopers.

Source: FBI - Criminal Justice Information Services Division

Crime Rates

39



Index Crime

Property Crime

Violent Crime

- 2017
- 2021
- 2024

Source: NYS Division of Criminal Justice Services
<https://www.criminaljustice.ny.gov/crimnet/ojsa/countycrimestats.htm>

Newsday Reports Increase in Property Crime from 2021 to 2022

SUFFOLK CRIMES

Cases reported to the Suffolk County Police Department

	2021	Jan. 1 to Dec. 3 2022
Murder/manslaughter	32	27
Forcible rape	50	41
Expanded rape	137	105
Robbery	258	229
Aggravated assault	805	776
Total violent crime	1,282	1,178
Burglary (total)	744	831
Burglary (residential)	314	350
Burglary (commercial)	430	481
Larceny (except vehicle)	12,003	14,163
Motor vehicle theft	1,103	1,265
Total property crime	13,850	16,259
ALL CRIME	15,132	17,437

SOURCE: IRS 2022; SUFFOLK COUNTY POLICE DEPARTMENT

NASSAU CRIMES

Cases reported to the Nassau County Police Department

	2021	Jan. 1 to Dec. 31 2022
Murder	10	6
Rape	19	11
Criminal sexual act	10	2
Sexual abuse	11	11
Robbery (other)	197	236
Robbery (commercial)	138	225
Assault felony	441	474
Burglary (residence)	292	455
Burglary (other)	348	422
Stolen vehicles	561	968
Grand larceny	3,201	4,584
ALL CRIME	5,228	7,394
Homicides	18	12

SOURCE: IRS 2022; NASSAU COUNTY POLICE DEPARTMENT

Long Island Media

41

Daily Paper

- Newsday

Weekly Papers

- Dan's Papers - Eastern Long Island
- Farmingdale Observer – Nassau County
- Garden City Life – Nassau County
- Glen Cove Record Pilot – Nassau County
- Great Neck Record – Nassau County
- Hofstra Chronicle – Hempstead
- Levittown Tribune – Nassau County
- Long Island Business News – Long Island
- Long Island Exchange – Long Island
- Long Island Press – Long Island
- Long Islander News – Huntington
- Manhasset Press – Nassau County
- Massapequa Observer – Nassau County
- Mineola American – Nassau County
- Nassau Herald – Cedarhurst, Lawrence, Inwood, Hewlett, Woodmere
- Noticia - Nassau & Suffolk Counties
- New Hyde Park Illustrated News – Nassau County
- The North Shore Leader – Locust Valley, North Shore, Long Island
- Oyster Bay Enterprise-Pilot – Nassau County

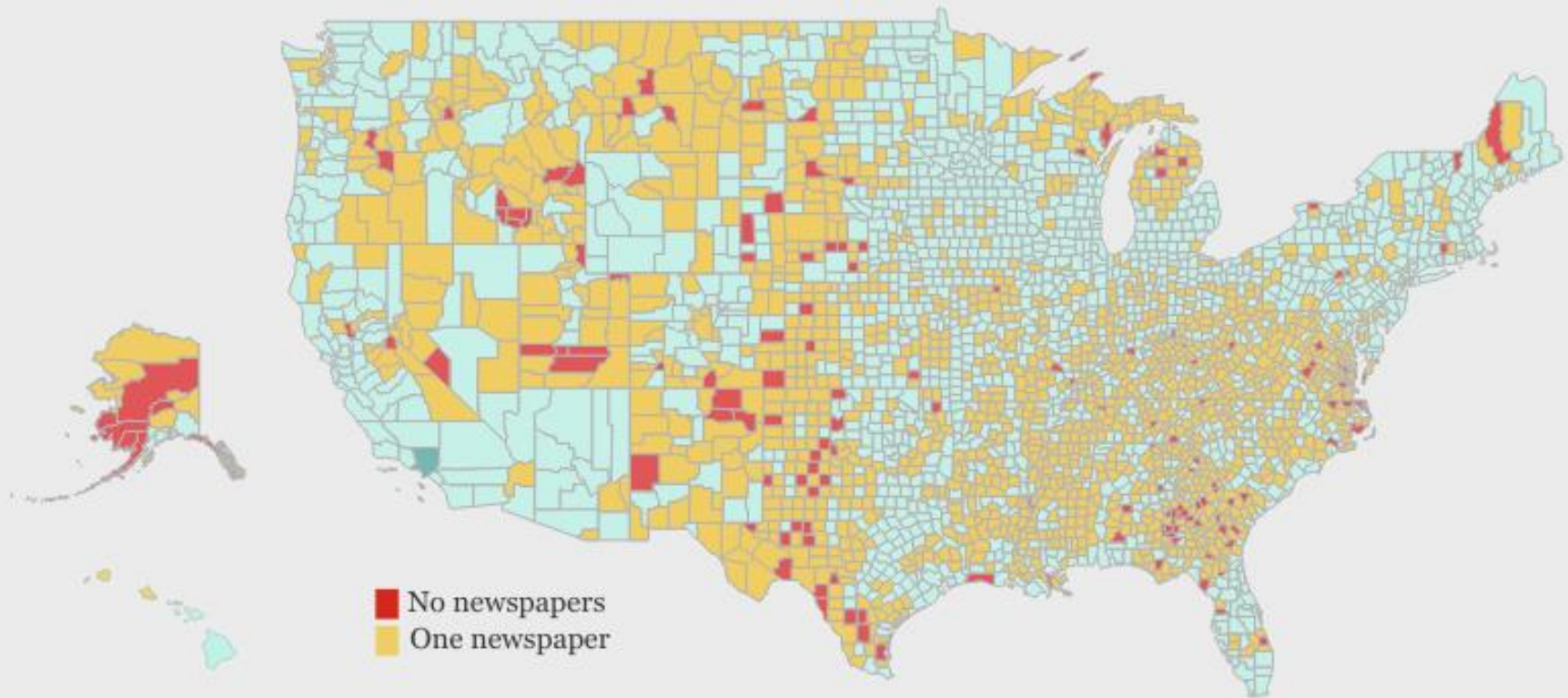
Television

- News12 Long Island
- WLIW Channel 21
- Oyster Bay Guardian
- Plainview-Old Bethpage Herald – Nassau County
- The Port Times Record – Port Jefferson, Belle Terre, Port Jefferson Station and Mount Sinai
- Port Washington News – Nassau County
- The Roslyn News – Nassau County
- The Southampton Press – Southampton
- The Sag Harbor Express – Sag Harbor
- Syosset-Jericho Tribune – Nassau County
- The Times of Huntington-Northport – Northport, East Northport, Fort Salonga - West, Eaton's Neck, Asharoken, Centerport, Smithtown, Nesconset, Hauppauge, St. James, Nissequogue, Head of the Harbor, The Branch, San Remo, Kings Park, Fort Salonga - East, and Commack
- The Times of Middle Country – Selden, Centereach and Lake Grove
- The Times of Smithtown – Smithtown, Nesconset, Hauppauge, St. James, Nissequogue, Head of the Harbor, The Branch, San Remo, Kings Park, Fort Salonga - East, and Commack
- The Village Beacon Record – Miller Place, Sound Beach, Rocky Point, Shoreham and Wading River
- The Village Times Herald – Setauket, East Setauket, Stony Brook, Old Field, South Setauket, Poquott and Strong's Neck
- The Westbury Times – Nassau County

Many US Counties Are News Deserts

42

In the U.S. 200 counties do not have a local newspaper. Half of all counties - 1,540 - have only one newspaper, usually a weekly.



Source: UNC Hussman School of Journalism and Media

Energy

43

- In 2021, PSEG LI's electric rates were 12% above NY State average and 93% above U.S. average.¹
- Heating fuel costs also tend to be higher than the national average.
- About **59%** of Long Island homes use **oil for heating**, compared to less than 9% nationwide and 33% in NYS.² Home heating oil is more expensive and more polluting than alternatives.

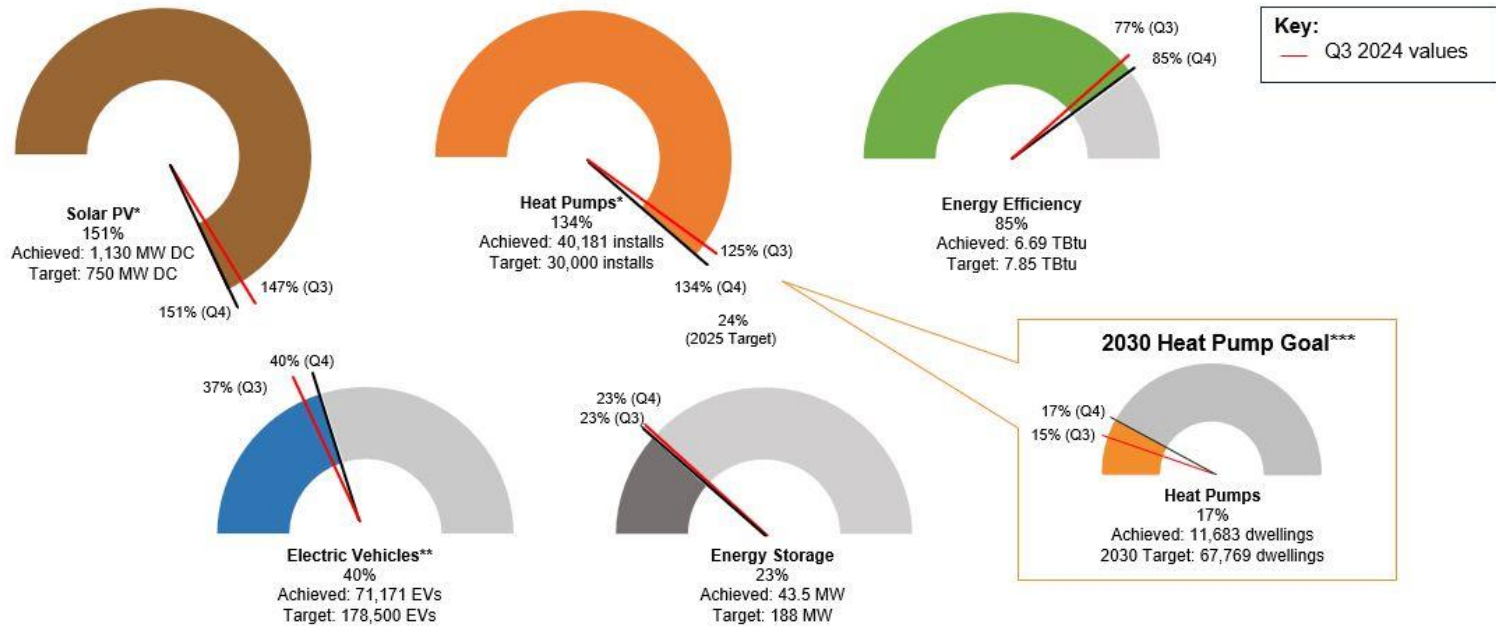
1. Source: U.S. Energy Information Administration

2. Source: U.S. Census

Contributing To 2025 NYS Clean Energy Goals

Contributing To 2025 New York State Clean Energy Goals

PSEG Long Island contributes to New York State Clean Energy Goals defined by the State's climate laws and policies. Utility 2.0 initiatives that are underway and planned will directly contribute to the achievement of goals in areas such as energy efficiency, energy storage, beneficial electrification (heating and transport), and renewable energy. The below charts reflect PSEG Long Island's progress towards its share of statewide goals for 2025.



Q4 - 2024

Current as of: December 2024 (Solar PV, Heat Pumps, Energy Efficiency and Electric Vehicles) and November 2024 (Energy Storage), based on data availability.
 * The 2025 Goals for Solar PV and Heat Pumps have been accomplished.
 ** The EV CLCPA Goal achievement has been adjusted to account for ALL EVs on the road on Long Island rather than EVs on the road associated with PSEG Long Island.
 *** The 2030 Heat Pump CLCPA Goal is reflected in the callout box because New York state has emphasized focus on the 2030 target on dwellings, which is a shift from the historical focus on heat pump installations.

Resiliency

45

LONG ISLAND'S TOP STORMS

Hurricane Gloria (1985)

78% Customers Affected

Damage Locations: 18,700

Restoration Time: 12 Days

Hurricane Irene (2011)

47% Customers Affected

Damage Locations: 19,900

Restoration Time: 9 Days

Superstorm Sandy and Nor'easter (2012)

90% Customers Affected

Damage Locations: 37,000

Restoration Time: 17 Days
(two storms)

Tropical Storm Isaias (2020)

50% Customers Affected

Damage Locations: 23,000

Restoration Time: 8 Days



Other Notable LI Storms

46

- 1938 – Long Island Express/Great New England Hurricane – Worst recorded storm to hit L.I. in modern history. Category 3 when it hit LI. Killed 60 on the East End, hundreds more in New England
- 1945 – Hurricane Carol – Category 2. 275,000 Nassau-Suffolk homes lost LILCO service.
- 1960 – Hurricane Donna – required evacuation of 4,000 to 5,000 people from the barrier beaches and of several hundred additional families from low-lying areas between Amityville and Babylon.
- 1978 – Blizzard of '78 – 2+ feet of snow and winds up to 80 MPH. 15-foot drifts reported. 11 houses collapsed. 3,000 cars were abandoned across Long Island and 2,000 people had to be put up in rescue centers
- 1992 – Nor'easter - two-day nor'easter brought record high tides and hurricane-force winds across the Island, that turned to an unpredictably heavy wet snowfall that compounded flooding problems and hindered clean-up efforts.

Notes

47

- The data presented in this document are the most currently available from the publicly available sources used. They are not all updated on an annual basis. We are open to including any more timely information sources if they are made known to us.
- We are always looking for new sources of information about issues and challenges to the Long Island region. If you are aware of any sources of authoritative information that you believe would be relevant to this project, please let us know about it.